

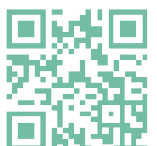
MORRELL HOUSE

NOVEMBER
2021

RESIDENT'S WORKBOOK

SHEFFIELD UNIVERSITY
LIVE PROJECT

SCAN FOR A LINK
TO THE OPHOUSE
WEBSITE



Play...

Contents

| | |
|----|---------------------|
| 3 | Table of Contents |
| 4 | Designing the Brief |
| 6 | Tiny Homes |
| 10 | Spatial Planning |
| 18 | Self Build |
| 22 | Storage |
| 28 | Materiality |
| 32 | Notes |

What is this booklet for?

The role of this booklet is to help the residents of Morrell House begin to consider the design of their future homes. Rather than swathes of information, this book covers five topics that are especially relevant to Morrell House. Each topic is explored through an activity, enabling the reader to begin to design their own home.

This booklet could form the basis of a future meeting where a group of individuals, each with their own booklet, work through the activities together - either virtually or in person. Alternatively, the activities could be explored by the reader in private, at their own pace.

Fundamentally this is a workbook, jot notes down it, scribble design ideas and cut it up!

For more information around Co-Housing refer to the 'Morrell House Prospectus' booklet.

Designing the Brief

Producing a well defined brief is essential to creating successful homes. The brief is a powerful tool that helps you express your feelings and desires into something tangible and actionable. It can act as a point of reference for, not only you but, all people involved in the design and implementation of the project

What are your priorities?

It is crucial to know **what your aims are for this project and what matters the most to you both currently and in the future.**

Design is often a continuous process of compromise. Therefore, it is essential you know where you would be willing to compromise and where you would not.

To help you with that, rank these in order of importance :

(1 = most important , 6 = least important)

| | |
|--|--------------------------------------|
| | Design Quality |
| | Budget |
| | Lifestyle Improvement |
| | Time Frame (i need to move in asap!) |
| | Sustainability |
| | Other, please specify |

Tiny Homes

Tiny homes are an efficient way of living. They have an average size of 30-50 Sq.m which brings many benefits.

Lower monthly bills, reduced embodied carbon from materials and faster construction times are a few factors which reduce the overall cost of this type of housing.

Considerations and Prompts

What aspects of a house do you find to be the most important and which ones could you live without?

Need inspiration? Think about what makes a house a home for you, it might be something like having space to chat round a table in the kitchen.

.....

.....

.....

.....

.....

.....

.....

What comforts do you want to have in your house?

Need inspiration? Think about how comfortable you are with multipurpose areas. For example, are you okay with having a workspace in your living room?

.....

.....

.....

.....

.....

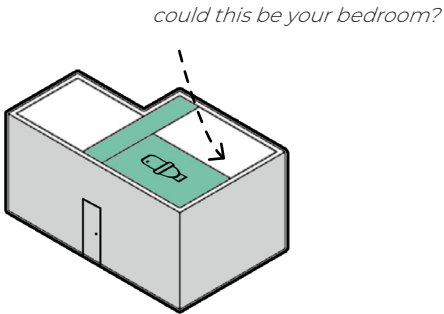
.....



.....

Arrange your Tiny Home on page 9. Think about which space is suitable for a bedroom / living room / study room / kitchen based on your lifestyle. Colour or label the white boxes

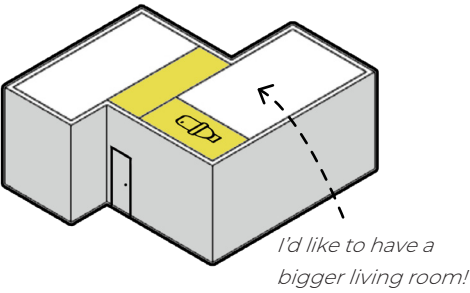






size XS



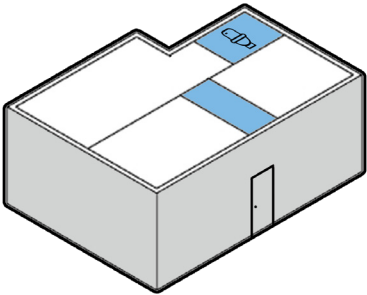
Area **38 - 45m²**
Unit Size 
Suitable for 




size S



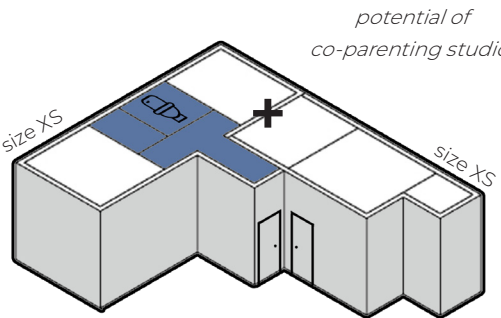
Area **51 - 62m²**
Unit Size  + 
Suitable for  + 




size M



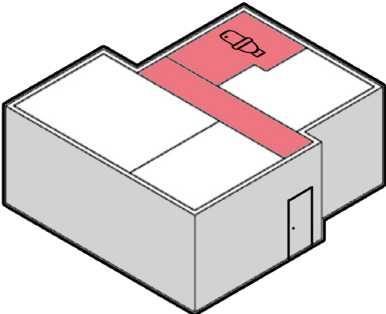
Area **63 - 68m²**
Unit Size  
Suitable for 




size L



Area **71m²**
Unit Size  
Suitable for 

size XL



Area **80m²**
Unit Size  
Suitable for 

Spatial Planning

Consider the layout of your home as the ‘bones’ to your project. You can apply finishes, arrange furniture and furnish later on. However, the spatial arrangements will have the greatest impact on the project meeting your needs and aspirations.

Considerations and Prompts

What spaces do you enjoy spending time in the most?

Need inspiration? Have a think about what spaces you enjoy being in and what is it about them that you enjoy the most, is it the size or intimacy perhaps?

.....

.....

.....

.....

.....

.....

.....

What are you going to be using each room for, could they be multifunctional?

Need inspiration? Think about who will be using each room and the practical layout solutions to suit this, for example do you like having your bed near a window or near the door?

.....

.....

.....

.....

.....

.....

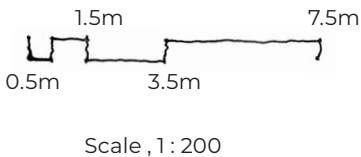
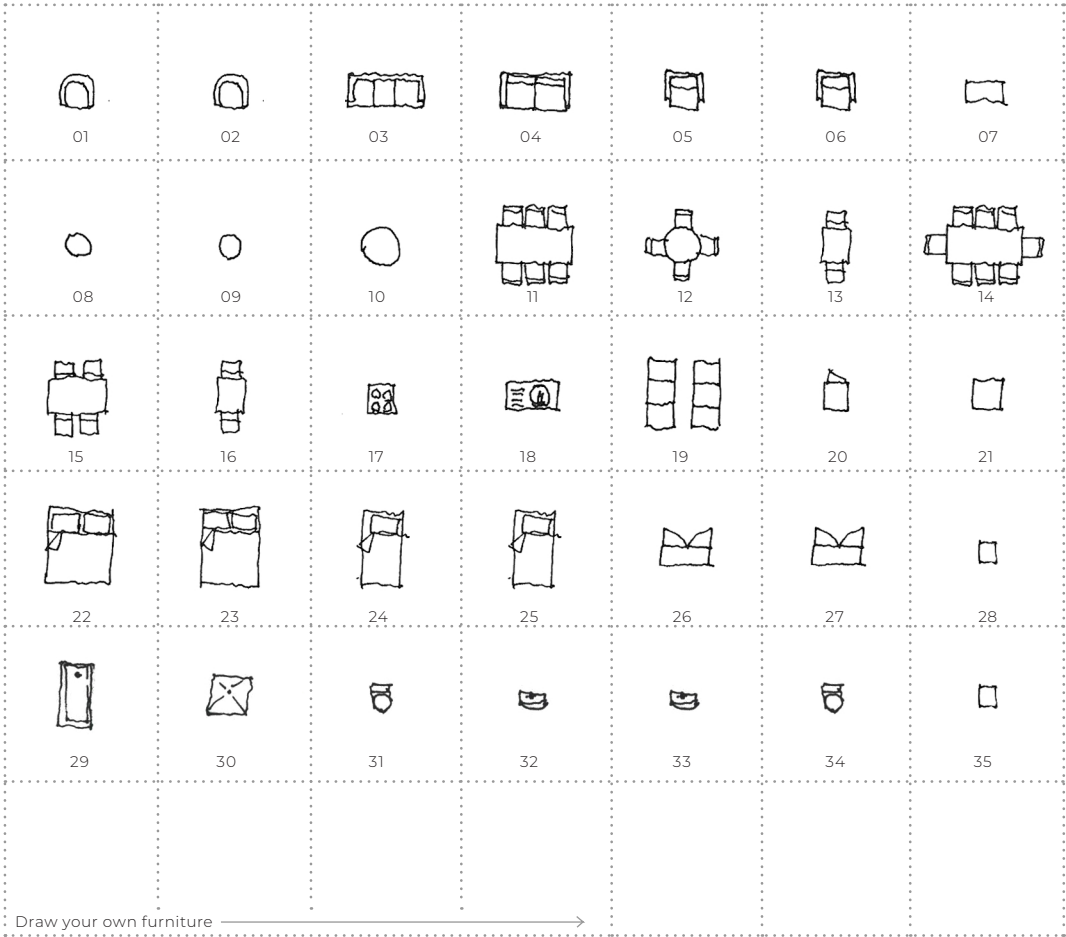
.....



Cut and Stick

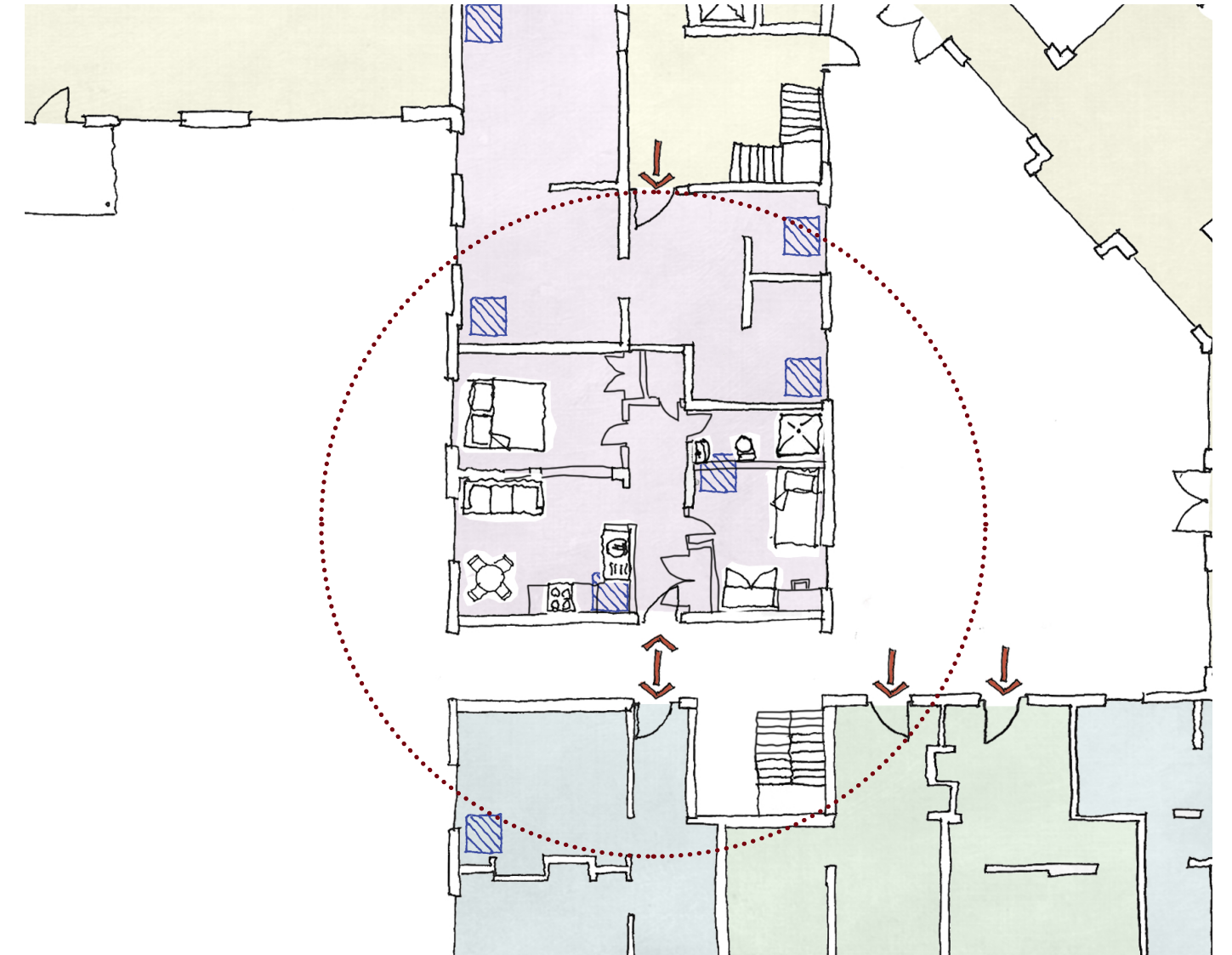
The furniture from this page is drawn to the same scale as the plans on pages 16 and 17. Cut out these templates and use them to arrange your spaces on the plans.

We have provided a basic array of furniture items. However if you would like to draw your own, measure your furniture and use the scale bar to ensure the correct scale relative to the plan.



| | | | | |
|-----------------------|-----------------------------|----------------------------|--------------------|-------------|
| 01. Chair | 08. Small Table | 15. Dinning Table for Four | 22. Double Bed | 29. Bath |
| 02. Chair | 09. Small Table | 16. Dinning Table for Two | 23. 3/4 Double Bed | 30. Shower |
| 03. Three Seater Sofa | 10. Large Table | 17. Cooking Hobs | 24. Single Bed | 31. Toilet |
| 04. Two Seater Sofa | 11. Dinning Table for Six | 18. Large Sink | 25. Single Bed | 32. Sink |
| 05. Chair | 12. Dinning Table for Four | 19. Kitchen Units | 26. Wardrobe | 33. Sink |
| 06. Chair | 13. Dinning Table for Two | 20. Fridge | 27. Wardrobe | 34. Toilet |
| 07. Coffee Table | 14. Dinning Table for Eight | 21. Washing Machine | 28. Bed-side Table | 35. Cabinet |

Internal Layout Top Tips

**1. Use Existing Services to Save Money**

Morrell House is fortunate enough to have existing water services in many of the rooms. Services are expensive to move, so consider locating your bathrooms and/or kitchens close to the existing plumbing infrastructure as a first step. We have marked the location of existing water services on the plans on the following pages.

2. Environmental Considerations

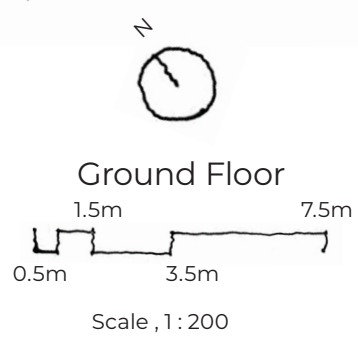
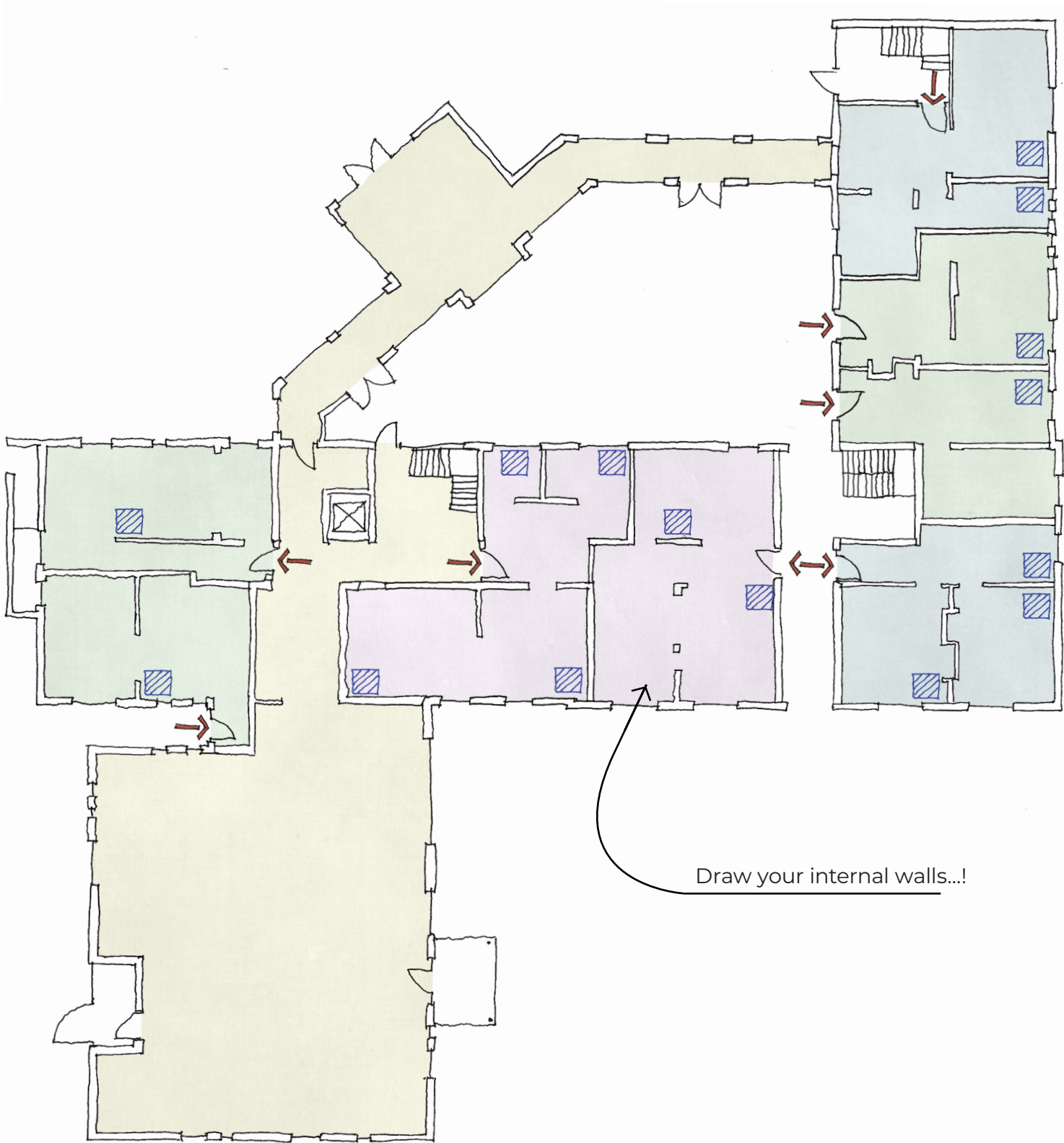
The plans on the following pages all have a North Arrow in the bottom left corner. Consider

the orientation of your rooms to the movement of the sun throughout the day. Remembering that east facing rooms will receive morning sunlight and west facing rooms will receive evening light. Use this to inform the where you locate your bedrooms, living room, etc.

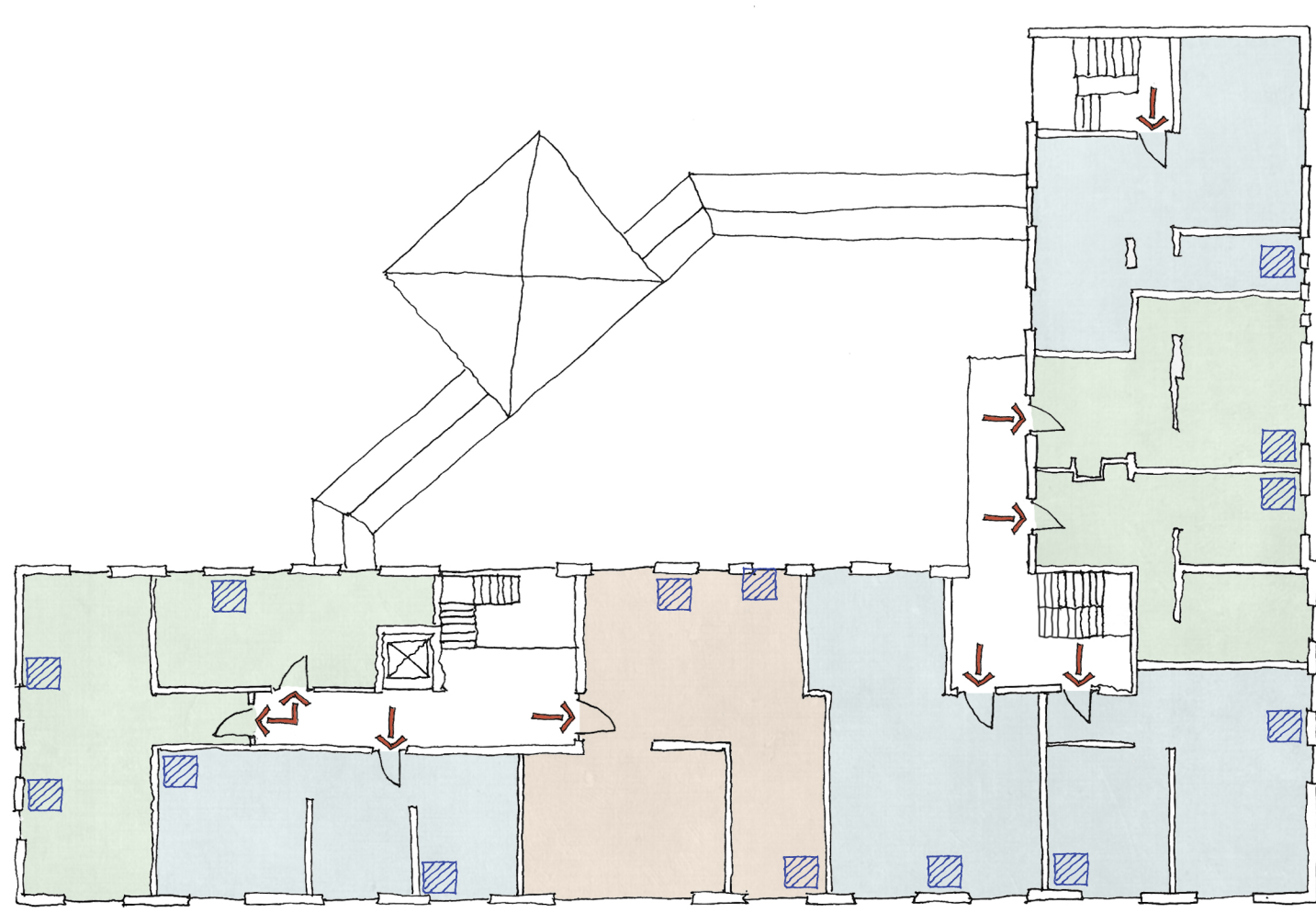
3. Room Function

Finally, consider the use of each individual room in detail. Who will use it? How long will they use it for each day? Will guests be in this space? What furniture is essential in this room for it to fulfill its intended use.





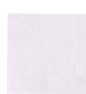


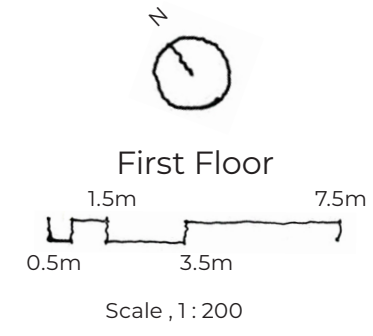


Ground Floor



Key :

- | | |
|--|---|
|  38-45 Sq.m, 1 Bed |  Shared Community Space |
|  51-62 Sq.m, 2 Bed |  Existing Water Services |
|  65 Sq.m, 2 Bed, 3 Person |  Entrance to Flats |
|  80 Sq.m, 2 Bed, 4 Person | |



First Floor

Self Build

Although it may seem daunting, Self Build does not need to be complex.

Self build brings many benefits that traditional building contracts cannot provide. Use of local supply chains and reclaimed materials, increased choice and control over the end product and a reduced final cost.

Considerations and Prompts

Are there any aspects of your future home that you would be keen to fully or partially build yourself?

Need inspiration? Are there any spaces for example in your current or previous homes that you’re proud of that could have a self-build element?

.....

.....

.....

.....

.....

.....

.....

How would you feel about self-building as a community, working together, not just for your home, but for shared spaces too?

Need inspiration? Have a think about what shared areas both residents and the community could benefit from and how you could have an impact through helping to build these spaces.

.....

.....

.....

.....

.....

.....

Self Build Chair

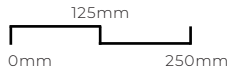
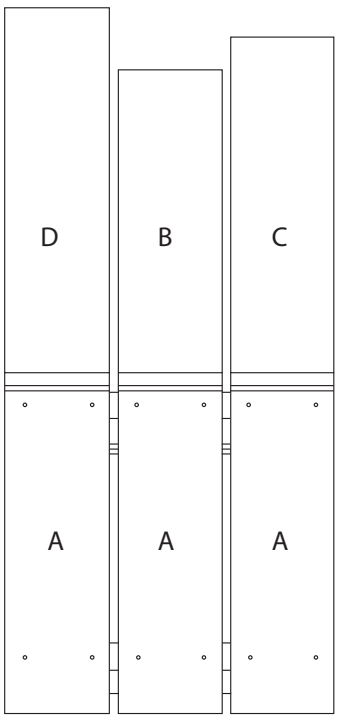
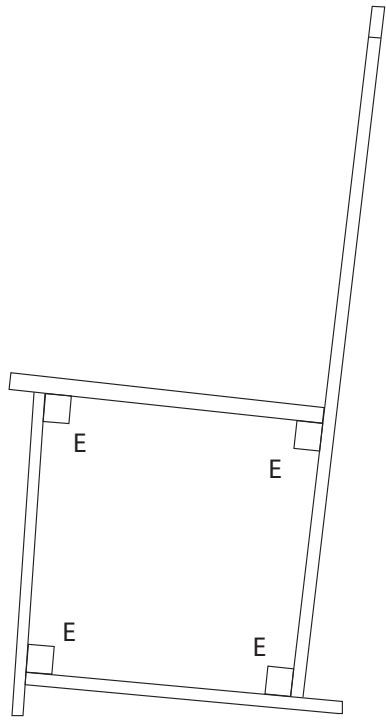
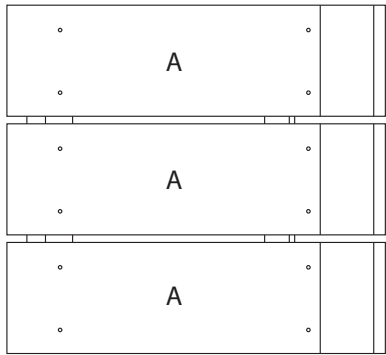
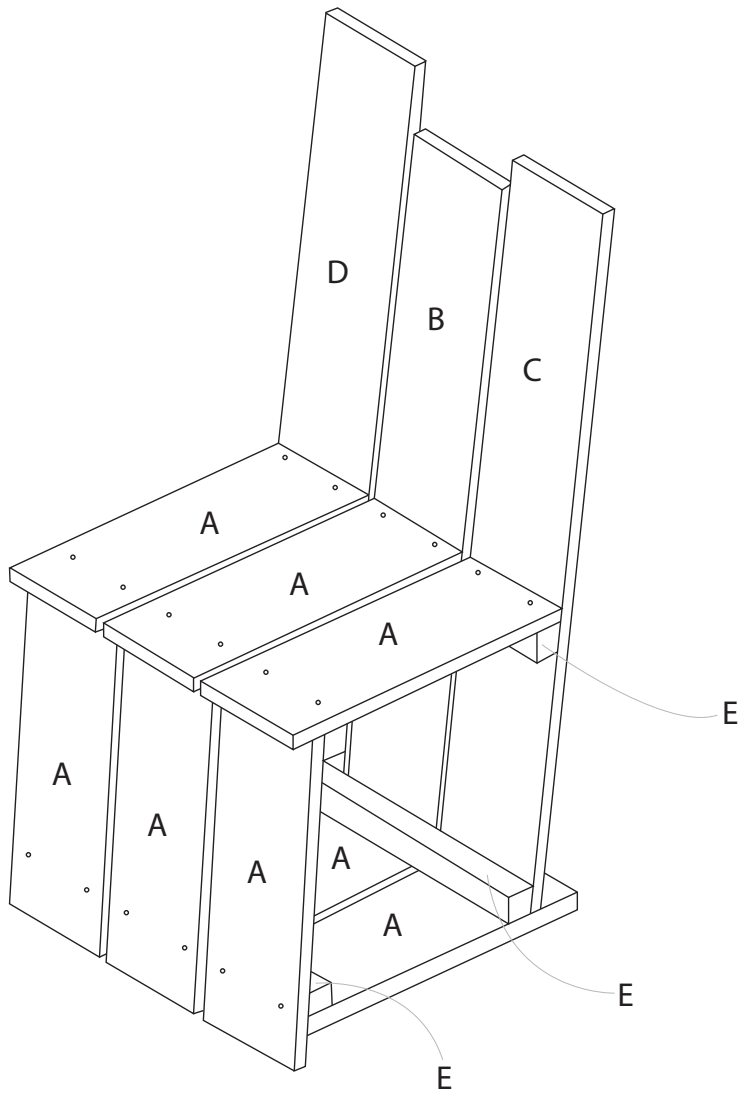


Planed Pine Boards

These pages contain all the necessary information to build a simple chair. Through reading the drawings and completing the exercise, we hope it will build your confidence to carry out more self build tasks in the future

Built entirely from Pine boards and fixed with screws. This is a beginner friendly, self build chair, designed by Enzo Mari from his self-build furniture book ‘Autoprogettazione’.

| | Size | Length | Quantity |
|---|------------|--------|----------|
| A | 140 x 20mm | 410mm | 9 |
| B | 140 x 20mm | 810mm | 1 |
| C | 140 x 20mm | 860mm | 1 |
| D | 140 x 20mm | 305mm | 1 |
| E | 14 x 14mm | 440mm | 4 |



Scale - 1:10

Storage

Living in a tiny home will mean that you need to find clever, efficient storage solutions.

Considerations and Prompts

What are your specific storage needs as a resident, do you think these might need to adapt over time?

Need inspiration? Think about your future needs and how they might change over time, will you be needing storage spaces for any hobbies you might have?

.....

.....

.....

.....

.....

.....

.....

How do you feel about additional storage space in your home, could a dedicated shared space for secure, individual storage work for you?

Need inspiration? Do you have belongings that you don't need access to all the time? Would an area not taking up space in your home be beneficial or not?

.....

.....

.....

.....

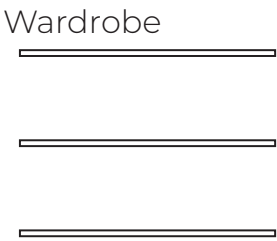
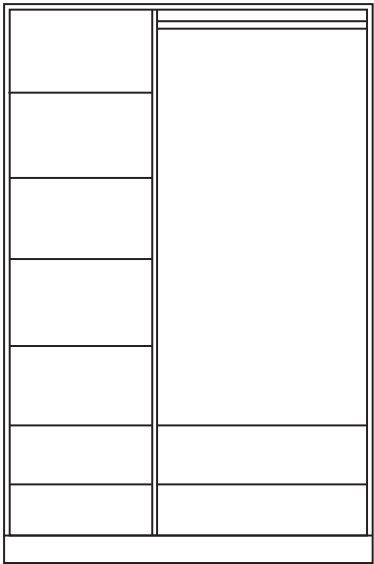
.....

.....

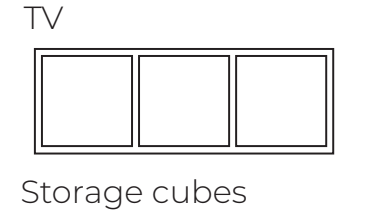
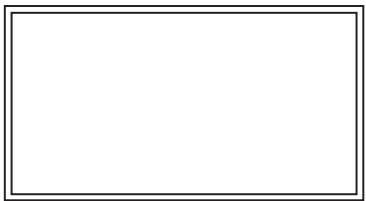
Design your own Storage

This activity will help you plan your storage on your internal walls. Measure the height and width of the internal wall that you would like to plan the storage on, use mm. Now draw the height and width of your wall onto the grid (page 27) using the 500mm spacings as a reference.

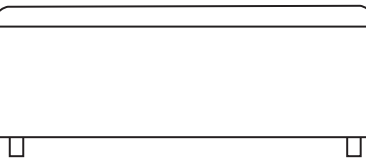
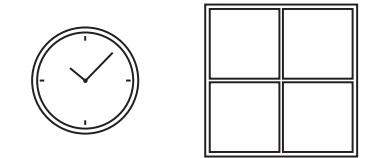
Next cut out the scaled furniture items from page 25 and begin to arrange these on the grid. After this, you can add in bespoke items into the surrounding gaps.



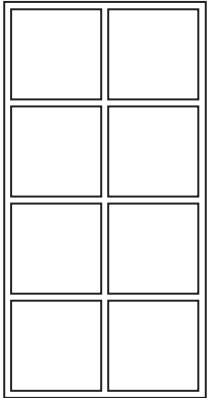
Wardrobe
Wall shelves



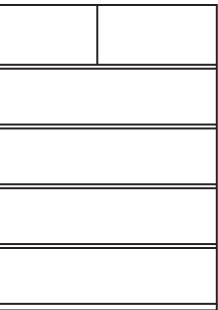
TV
Storage cubes



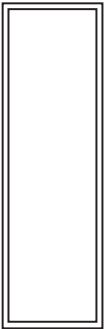
Ottoman storage



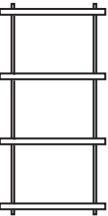
Storage cubes



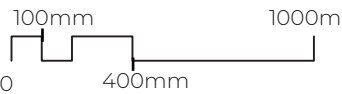
Chest of drawers



Mirror



Shelves

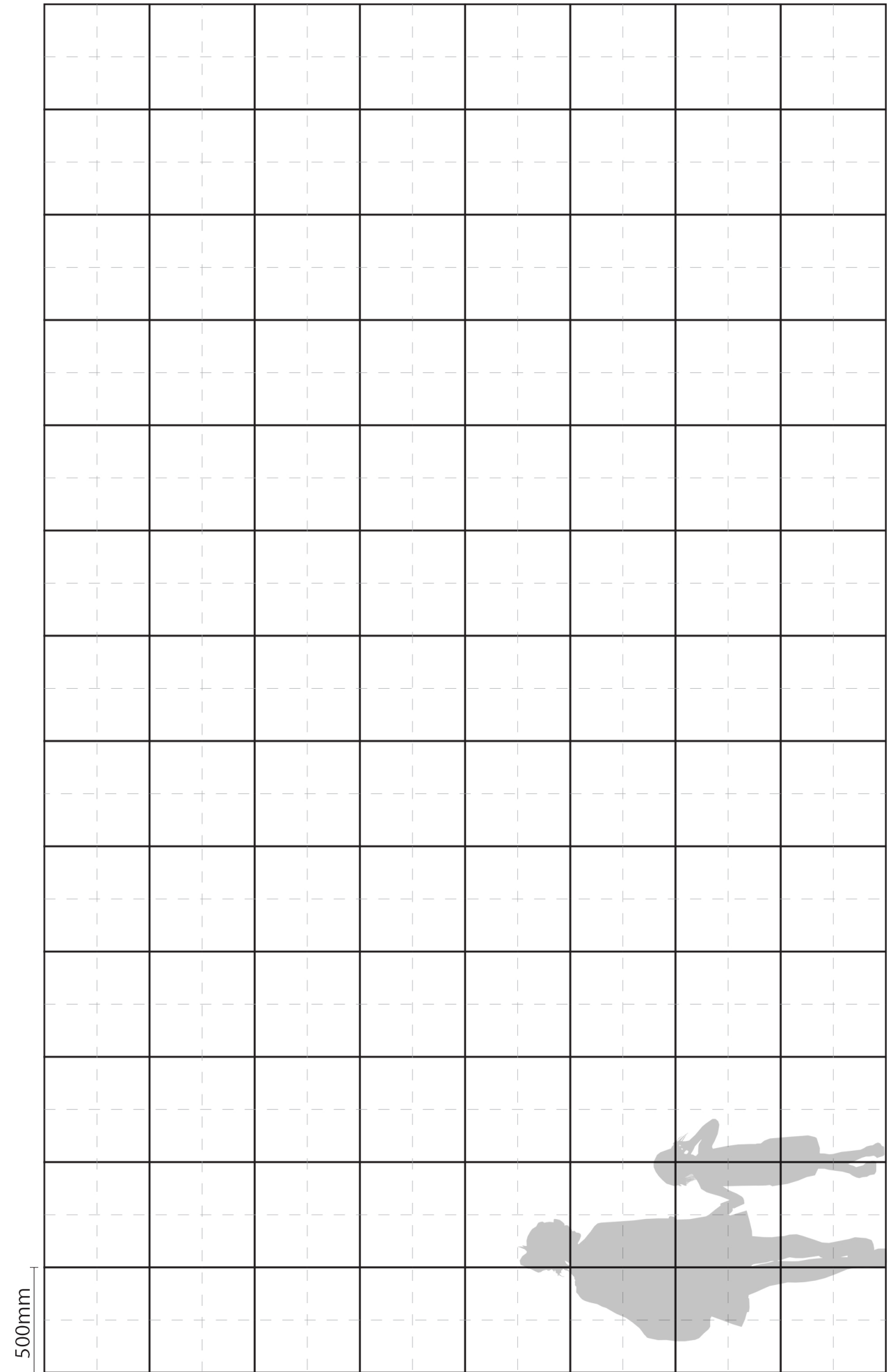


Scale 1:25



27

Storage



Materials

The cost of materials will make up a substantial chunk of your final build cost.

However, there are ways to reduce this cost. Look for reclaimed materials, use lower cost materials in a clever way or embrace the beauty of a raw or exposed material.

Considerations and Prompts

How do you want your home to feel, could the materials help in achieving your desired look and feel?

Need inspiration? Think about your favourite space, is it light or dark, are there lots of textures or colour?

.....

.....

.....

.....

.....

.....

.....

What materials work well in your current or previous living situation, are there things you would change that can be incorporated?

Need inspiration? Think about practicalities of certain spaces, for example kitchens require a hardwearing, easy clean floor but would something cosier work better in living spaces?

.....

.....

.....

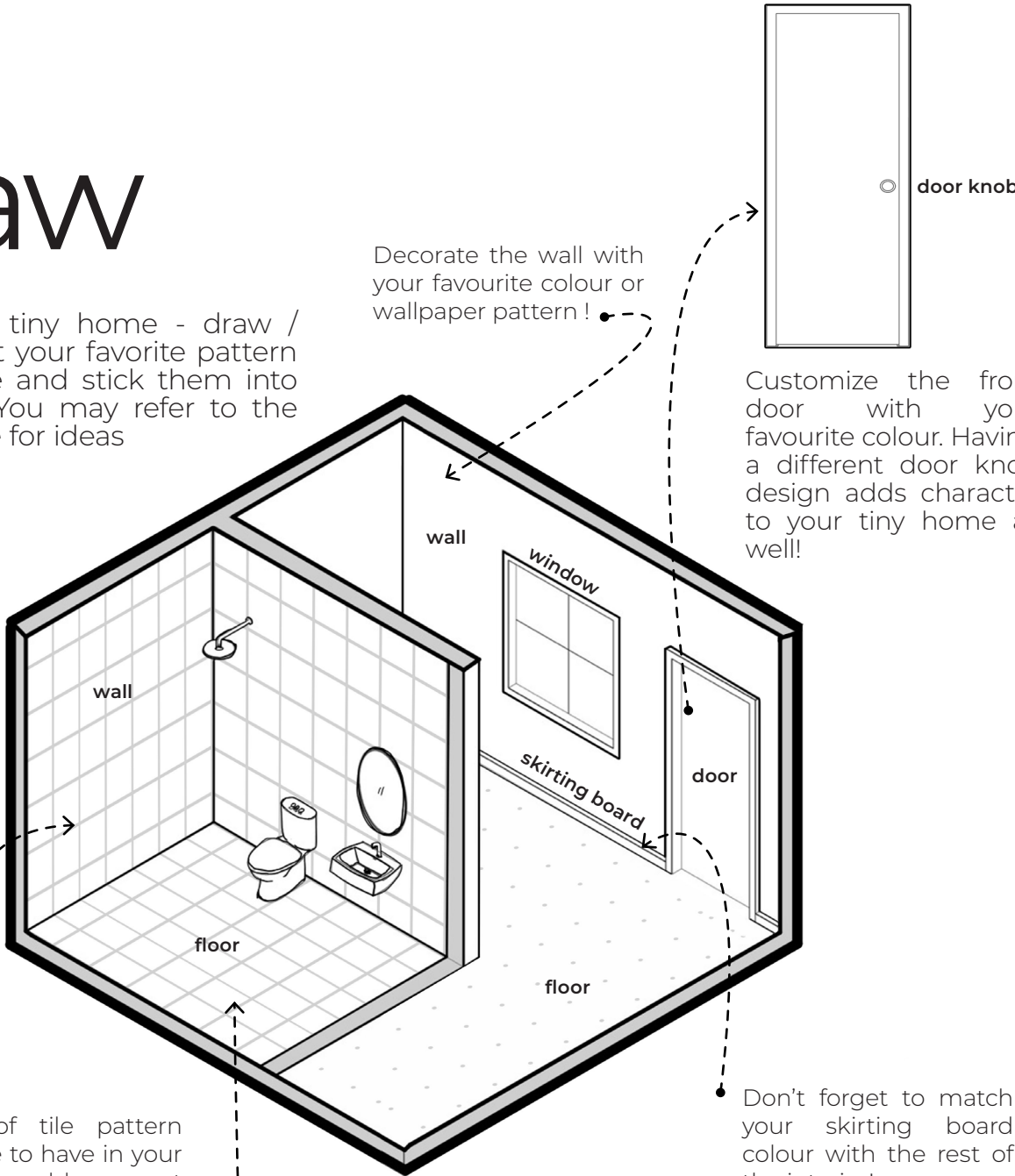
.....

.....

.....

Draw

Decorate your tiny home - draw / colour / cut out your favorite pattern from magazine and stick them into the template. You may refer to the Material Palette for ideas



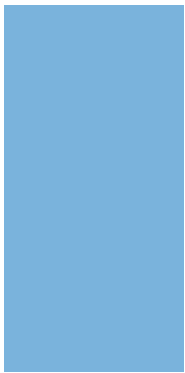
Decorate the wall with your favourite colour or wallpaper pattern!

Customize the front door with your favourite colour. Having a different door knob design adds character to your tiny home as well!

What kind of tile pattern would you like to have in your bathroom? or would you want something else for your wall?

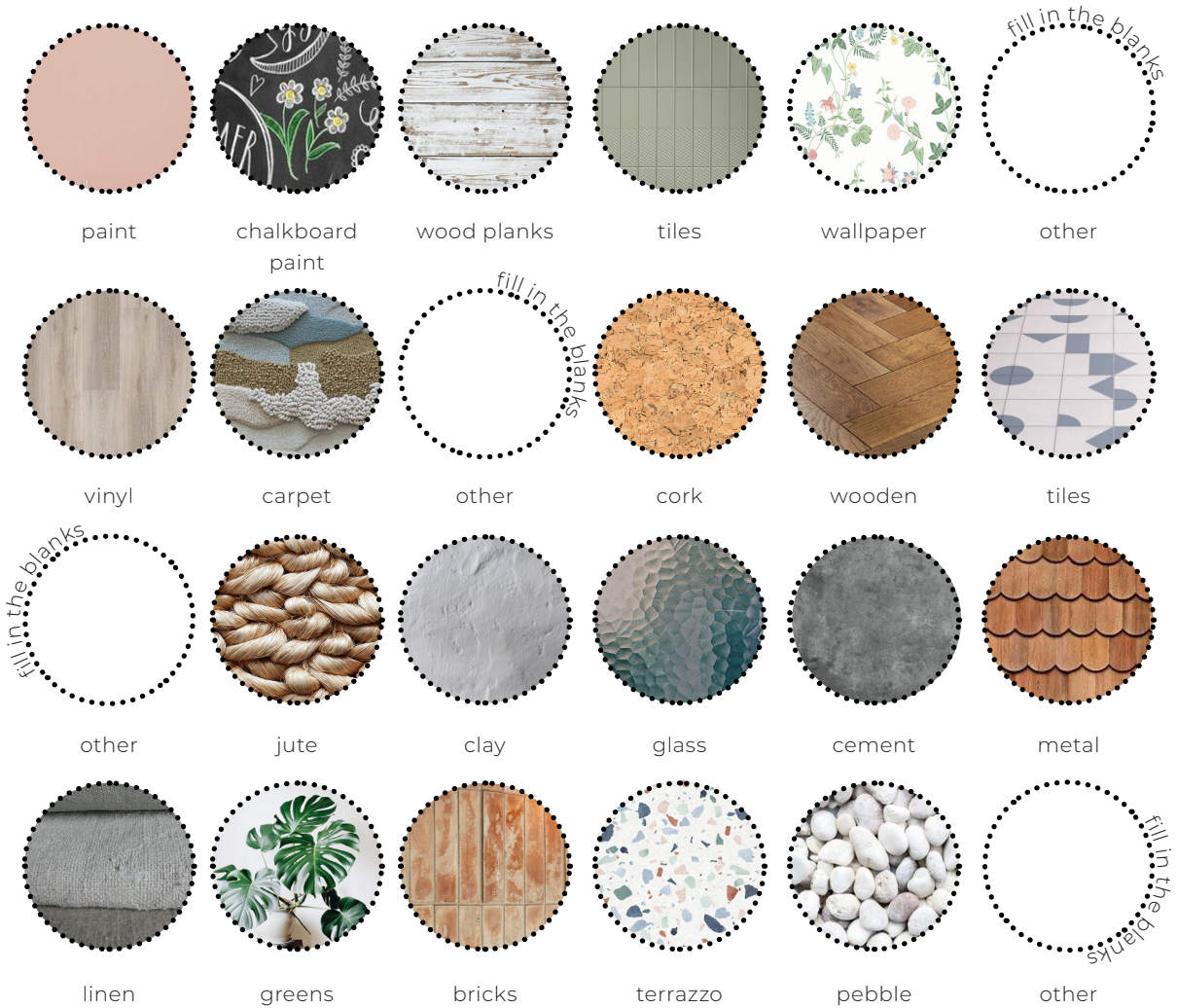
Choose the right flooring for the room depends on the usage and your interior decoration scheme

Don't forget to match your skirting board colour with the rest of the interior!

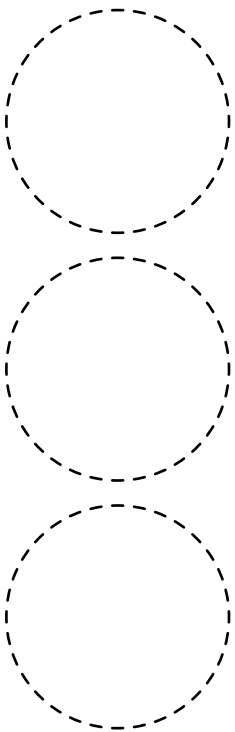


Material Palette

Before renovating your tiny homes, below are some material suggestions for interior finishing to add into your shopping list.



Fancy Something? Draw / write / cut out from the magazine and paste them in the circles below



This image shows a full page of white paper with horizontal dotted lines. The lines are evenly spaced and run across the width of the page, providing a guide for handwriting or typing. There are no margins, text, or other markings on the page.[illegible]

OpHouse
@ophouse_York
ophouse.co.uk



