



Live Projects and Community-Led Housing in the UK

- a case study from the Sheffield School of Architecture working with OpHouse in York.

Sam Brown - Live Projects Coordinator, University of Sheffield

Elle Clemens - MArch Architecture, University of Sheffield

Laurie Hampson - MArch Architecture, University of Sheffield

Scott Mackenzie - MArch Architecture, University of Sheffield

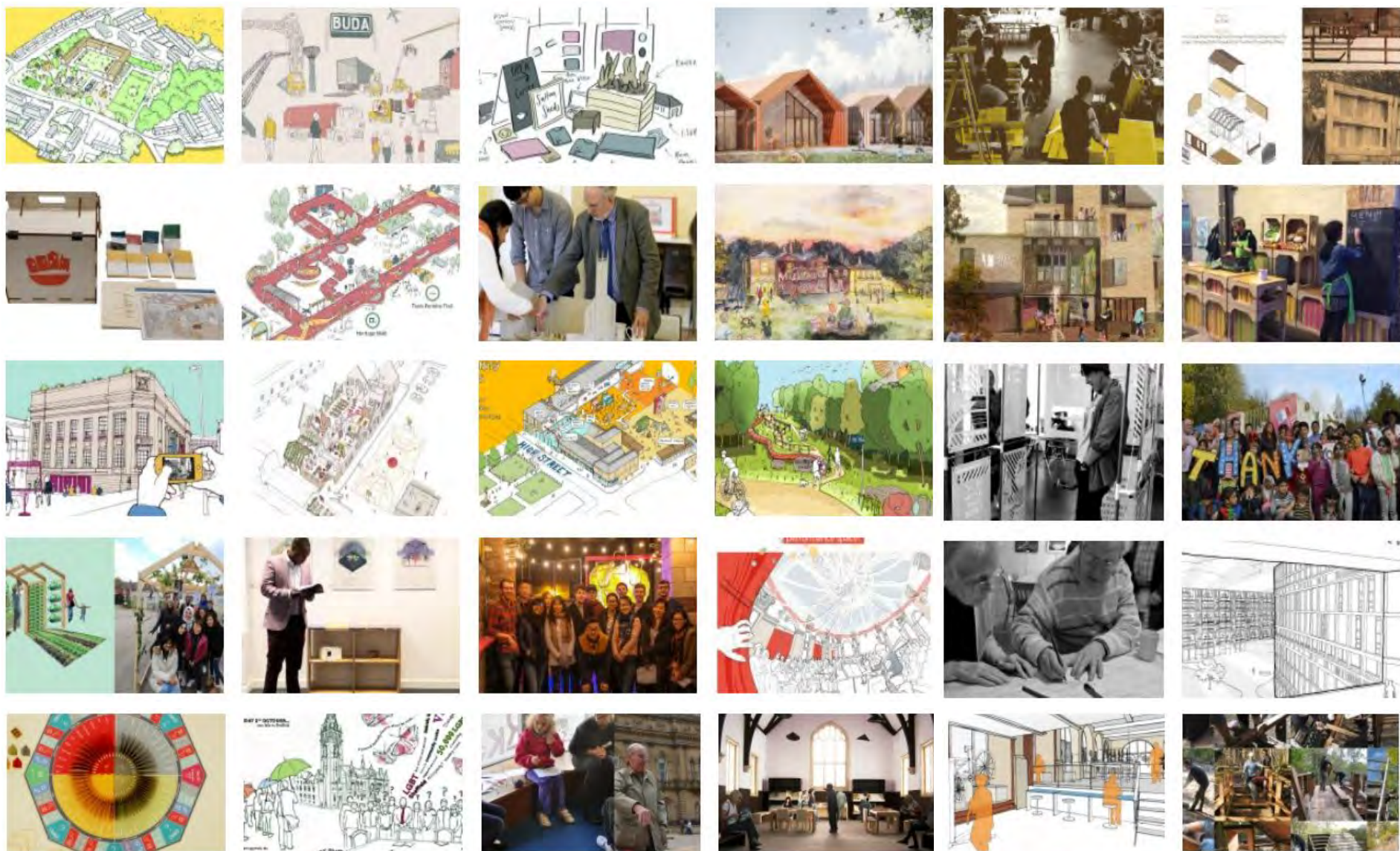
James Neward - YorSpace / designwell

Thomas Ruff - MArch Architecture, University of Sheffield

Presentation to:
International Cohousing Summit 2022
 A Gathering of Professionals - 13-15th January 2022



The
 University
 Of
 Sheffield.



- **Live Projects** - est. 1999 - c.250 projects, c.2150 students, 16 countries.
- Student groups work with community 'clients'.
- Many long-term and ongoing partnerships, making a real social and material impact.



The
University
Of
Sheffield.



- **Live Works** - city-centre, off-campus - www.live-works.org
- Project Office employing students & graduates, follow-on support for Live Project clients.
- “Urban Room” - a founder of Urban Rooms Network - research base for civic engagement, live pedagogy, participatory practice, evaluation of social impact.





- **Cohousing Futures (2019) - with Five Rivers Cohousing, Sheffield.**
- Live Project team helped the group develop 'design literacy' and appraise sites against a vision.
- Handover documentation set out a roadmap for further group development and capacity building.

HOUSING MODELS GAMES

SELF-BUILT



'WildHouse is an open source project to reinvent the way we make homes. It is being developed by architects, designers, engineers, inventors, manufacturers and builders, collaborating to develop the best, simplest, most sustainable, high performance building technologies, which anyone can use and improve. Our aim is for these technologies to become new industry standards, the bricks and mortar of the digital age' WildHouse team

PRE-FAB



The House, in Manchester, aims to combine the cost benefits of modular construction with the flexibility offered by architect-designed properties. Residents can choose between open plan or more traditional room-based layouts, specify the number of bedrooms, and select whether living rooms are upstairs or downstairs. (Shekita, UrbanSpace)

CO-HOUSING

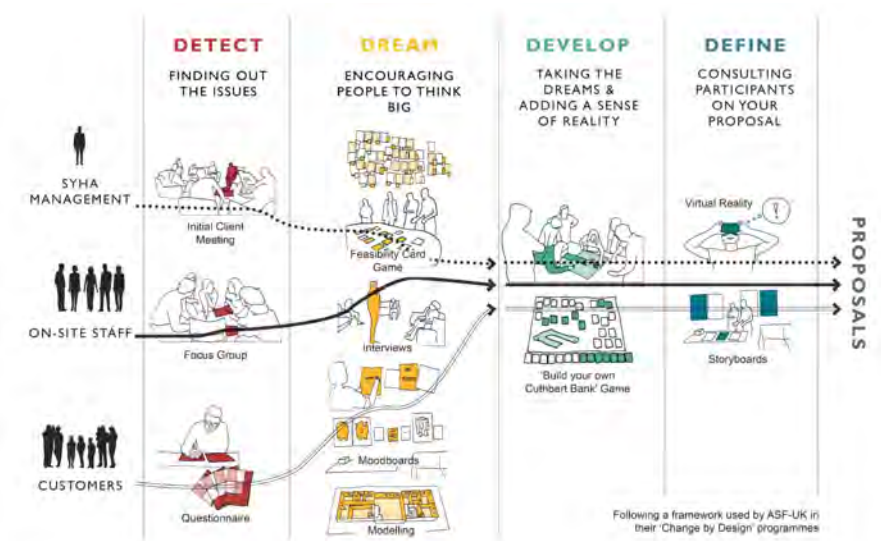


'Low Impact Living Affordable Community' LILAC is the UK's first cohousing project, comprising of 20 households. The idea of LILAC is that you buy shares in the community, splitting the cost of your home with the rest of the citizens, helping out with building, cooking, cleaning and, well, being nice to each other.

ECO-HOME



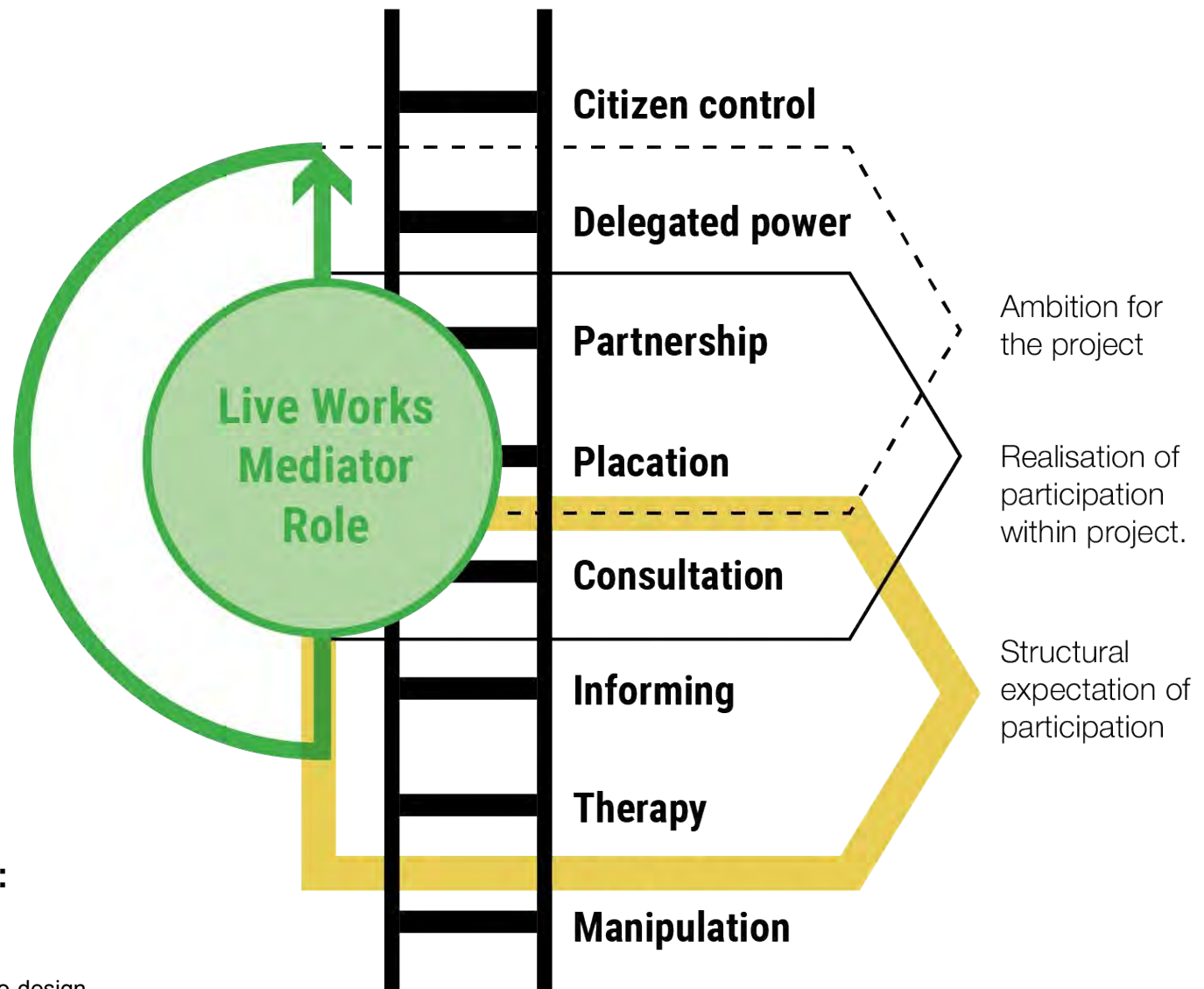
bedZED is the UK's first large-scale, initial use sustainable community with 100 houses, office space, a college and community facilities. (Peabody)



- **South Yorkshire Housing Association (SYHA) 'Project Stack'** (ongoing)
- Links across the School with an annual Live Project, inc.:
 - **Sheffield Housing Conversations** (2017)
 - **Live Well** (2019), **Cuthbert Bank** (2019) and **Growing Communities** (2020)
 - **Neighbourhood Review** (2021)



The
University
Of
Sheffield.



Our Approach and Aims:

- creative tools of engagement.
- co-production: co-research + co-design.
- to open up processes of spatial production.
- building capacity at a local level, acting as advocates for marginalised voices.
- to create more sustainable, resilient and inclusive built environment.

International Co Housing Summit

Live Project

The University of Sheffield

What was the
Project ?

Our Brief



Project Brief & Design Statement Morrell House



Outline Scope of works - who's doing what

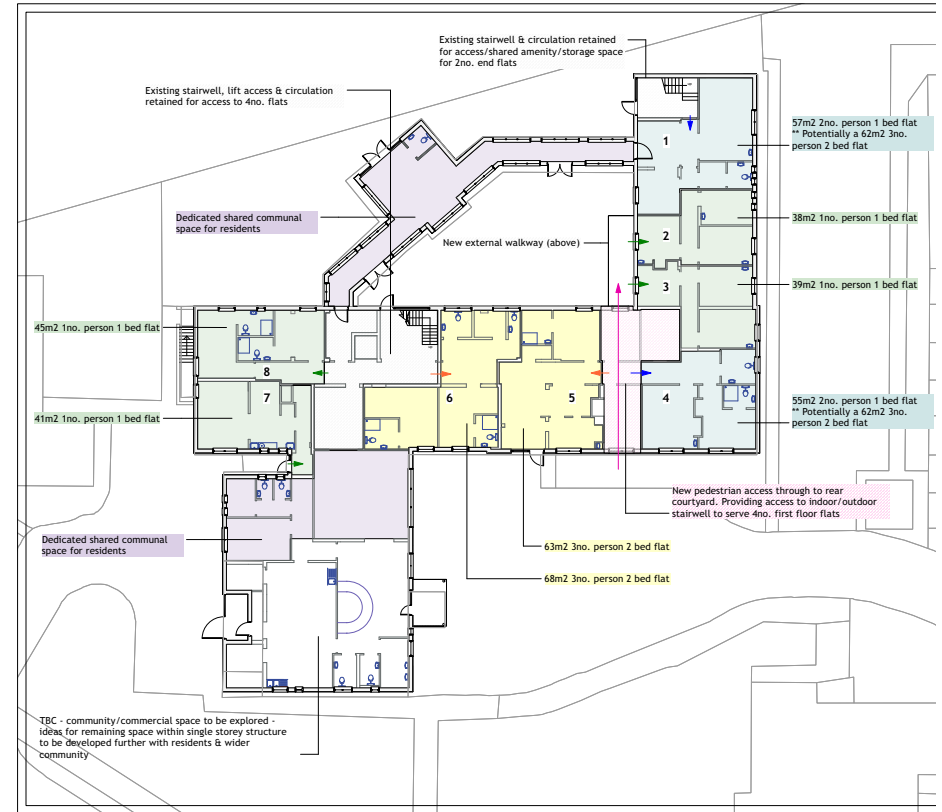
OpHouse in partnership with YorSpace will raise finance and develop proposals in order to buy and redevelop a City of York Council (CYC) owned property, Morrell House. OpHouse has been working closely with Tim Moon of CYC to develop the proposals for a community led housing redevelopment of Morrell House.

Using as much of the existing infrastructure already present onsite, the proposal is to dissect and renovate the existing Morrell House care home building and turn it into self contained dwellings.

These units will be let to residents who become members of a fully mutual housing cooperative, which will be formed and managed by the future residents with support from OpHouse and YorSpace.

The plan is to involve future residents in design decisions and, where practical, utilise the skills and experience of residents to help deliver the build. This means factoring in an element of self build and self finish in order to a) reduce costs to residents and b) allow residents to personalise their properties.

Design workshops with residents will build on this initial brief and inform the future development of design proposals prior to a Full planning application.

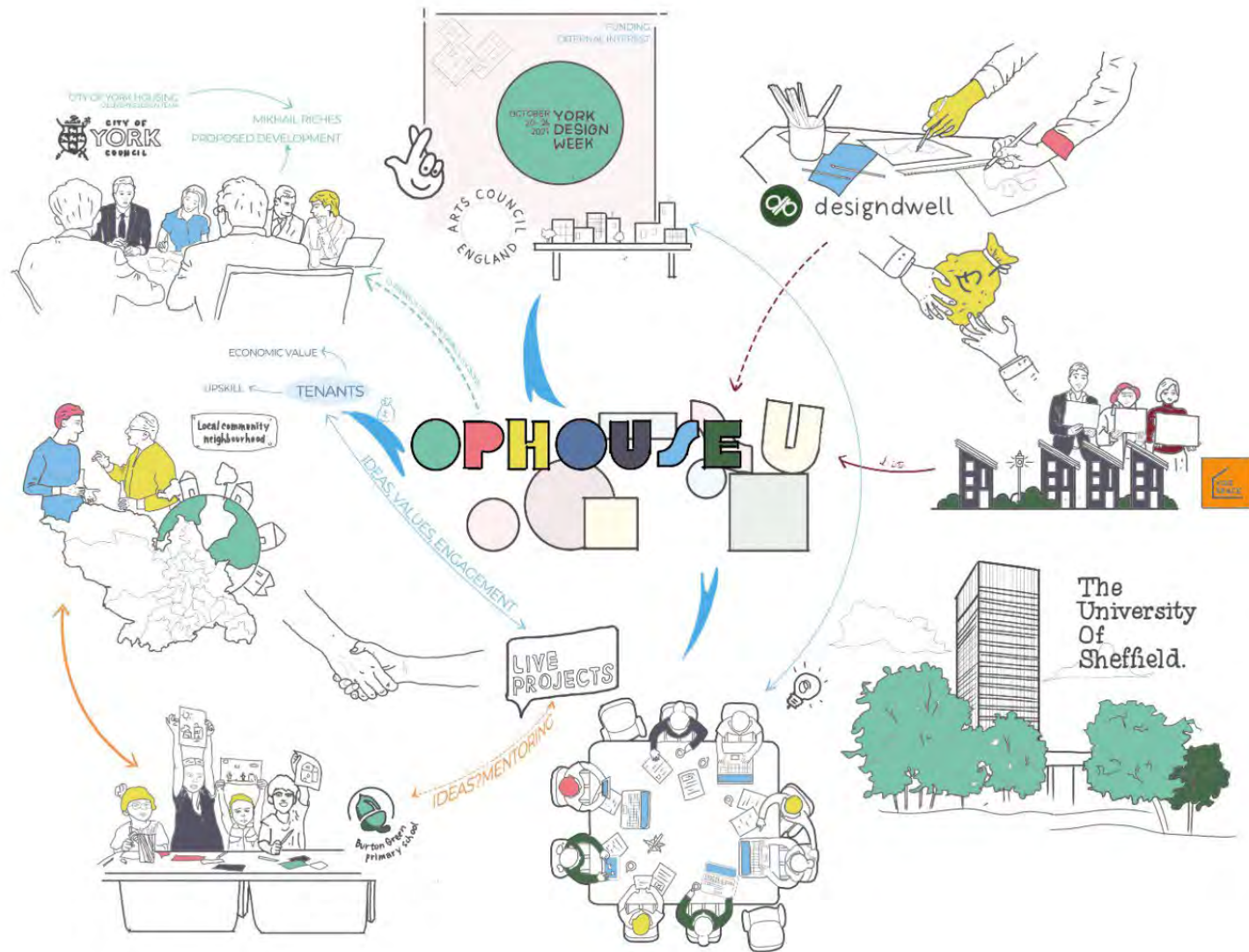


What is OpHouse ?

OPHOUSE



Stakeholder Map



Morrell House



Research Approach





Tickets & event information at yorkdesignweek.com



[/yorkdesignweek](#)
[@yorkdesignweek](#)
[@yorkdesignweek](#)

York Design Week
is organised by:

Anna Manfield
 Civit-Tex Orga
 Dan Baines
 Jai Sandhu
 Laura Sanderson
 Mark Winter
 Millie Davis
 Natalie Bennet
 Owen Turner
 Owen Powell
 Rebecca Carr
 Richard Corrigan

The week would not have
been possible without the
help and support of the
following organisations;

SPARK York CIC
 York St John University
 York College
 York MCN
 York Guild of Media Arts
 York Civic Trust
 Rowntree Park
 Colour Options
 OF Smith

...and the hard work of
these creative agencies;

Kaizen Arts CIC

United by Design

dogeatog



Supported using public funding by
**ARTS COUNCIL
 ENGLAND**

All times and dates correct at time
 of printing, visit yorkdesignweek.com
 for up-to-date information.

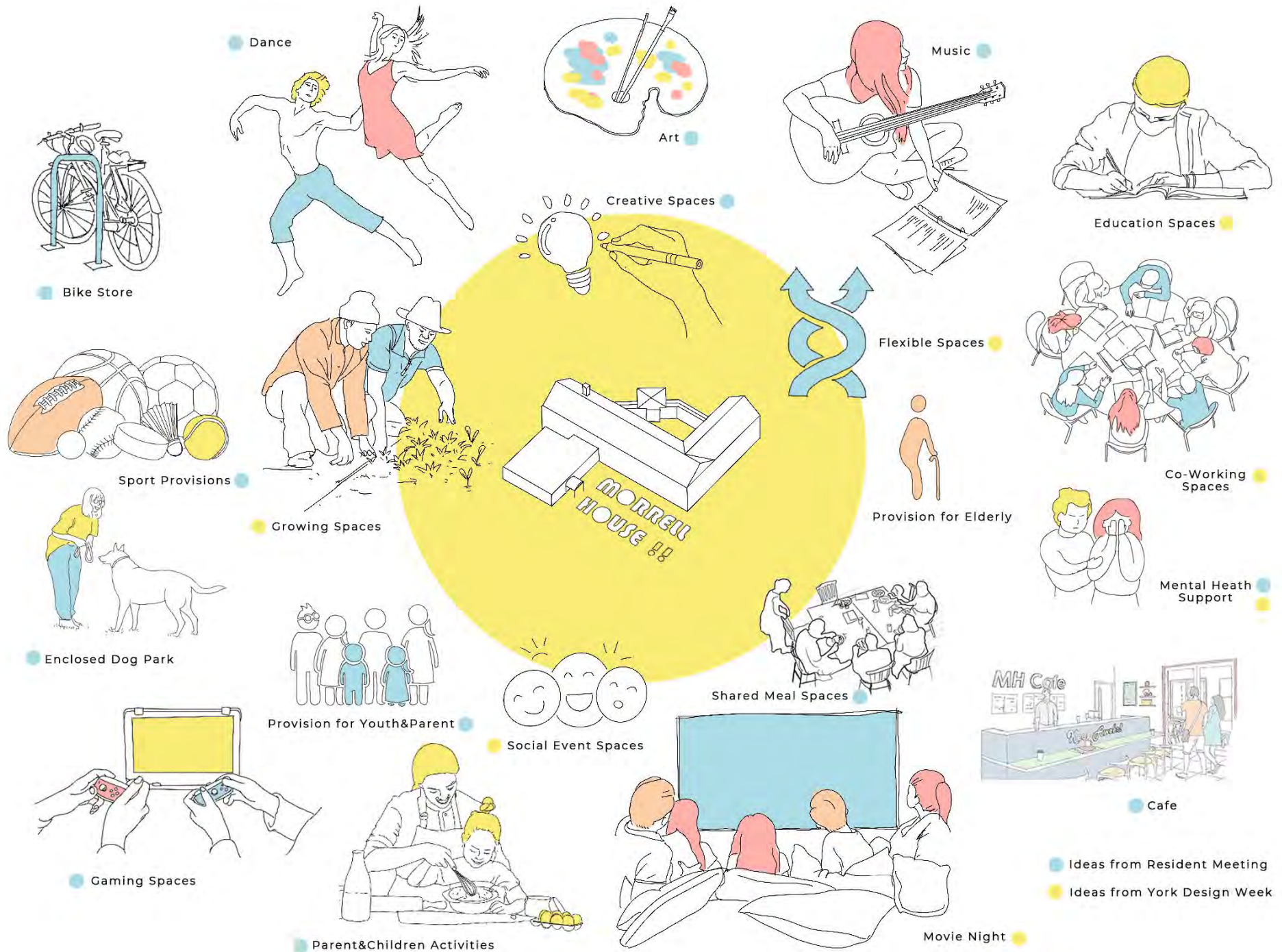








What We
Found...



Significant Findings

- 1) Lack of community facilities in immediate area
- 2) Lack of knowledge about co-housing
- 3) High levels of interest and willingness to be involved from local community

Our Outputs...



3 Contents

4	Table of contents
5	What are live projects?
6	What is Morrell House?
7	How to start a co-housing project
8	How to start a co-housing project
9	Examples of co-housing
10	Find out more on co-housing
11	Glossary

What is this booklet for?

This short booklet will explain to you what co-housing is, why it is relevant in today's context and how co-housing principles could be applied to Morrell House in York.

This booklet also contains a collection of co-housing projects from the UK & abroad to showcase the success stories from other co-housing communities.

By collating this information together we hope to offer a better understanding of co-housing and other related theories such as time community lead design and self-



How can I find out more information on co-housing in the UK?

UK CoHousing Network

What is it?

The UK Cohousing Network is a membership organisation 'with a mission to enable communities to use cohousing principles to create better places to live by reducing isolation & loneliness, and by sharing facilities and services to reduce living cost'.

Their website is a great resource to view other co-housing schemes in the UK and to get in contact with people already part of a co-housing scheme.

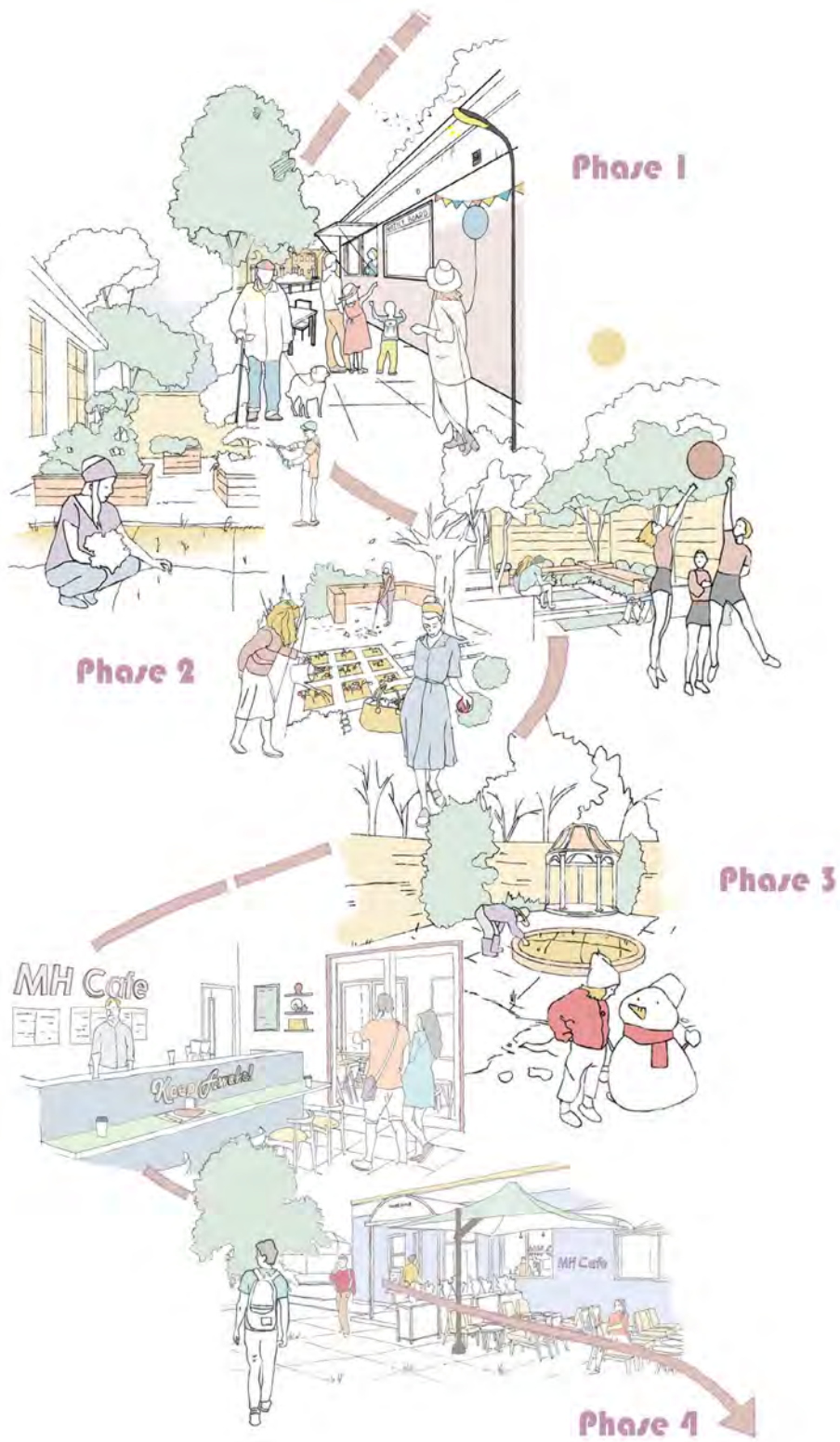
If you would like to know more...

If you would like to learn more about co-housing in the UK or get involved with other like minded people, visit the UK co-housing Network at cohousing.org.uk





A vision for the future





OPHOUSE / MORRELL HOUSE
2021

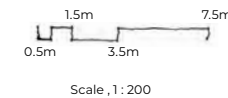
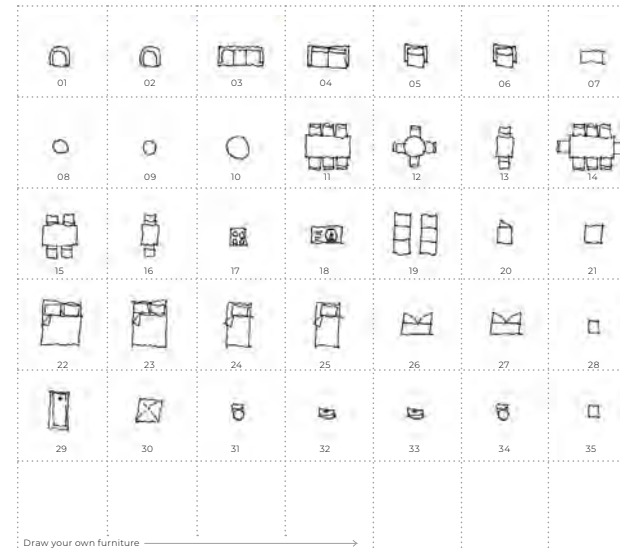




Cut and Stick

The furniture from this page is drawn to the same scale as the plans on pages 16 and 17. Cut out these templates and use them to arrange your spaces on the plans.

We have provided a basic array of furniture items. However if you would like to draw your own, measure your furniture and use the scale bar to ensure the correct scale relative to the plan.



01. Chair	08. Small Table	15. Dinning Table for Four	22. Double Bed	29. Bath
02. Chair	09. Small Table	16. Dinning Table for Two	23. 3/4 Double Bed	30. Shower
03. Three Seater Sofa	10. Large Table	17. Cooking Hobs	24. Single Bed	31. Toilet
04. Two Seater Sofa	11. Dinning Table for Six	18. Large Sink	25. Single Bed	32. Sink
05. Chair	12. Dinning Table for Four	19. Kitchen Units	26. Wardrobe	33. Sink
06. Chair	13. Dinning Table for Two	20. Fridge	27. Wardrobe	34. Toilet
07. Coffee Table	14. Dinning Table for Eight	21. Washing Machine	28. Bed-side Table	35. Cabinet

Reflections and Challenges ...







x



The University Of Sheffield.

First Resident's Meeting
Date: 27/10/2021

Feedback and Comments

To see it become successful and offer a resource for the exiting community.

Aim to live as a community, with a sense of belonging to get to know neighbours and surrounding people.

Education for Social Change Group.

Currently not much in the way of community for people without children, so a place to provide community activities for all ages.

A space to feel 'our own' with a sense of autonomy.

To provide co-working spaces

A place for community facilities and parking spaces.

Shared spaces and values between residents, as well as affordability.

Casual activities to do with other residents for example yoga and movie nights.

A place that provides quality education for the community, as well as mental health support.

What are your aspirations for what the Morrell House resident community could provide for you?

Cooking for others and first aid.

Teaching and using each other's skills, and sharing them with others in the community.

Interest in mindfulness and meditation.

Cooking and gardening skills for allotments. Would be nice to grow veg together.

Experience dealing with the council and facilitating the purchase of the land.

Technology information and teaching as well as programming.

Growing different plants together, and learning and sharing knowledge. Multiple plants can support each other.

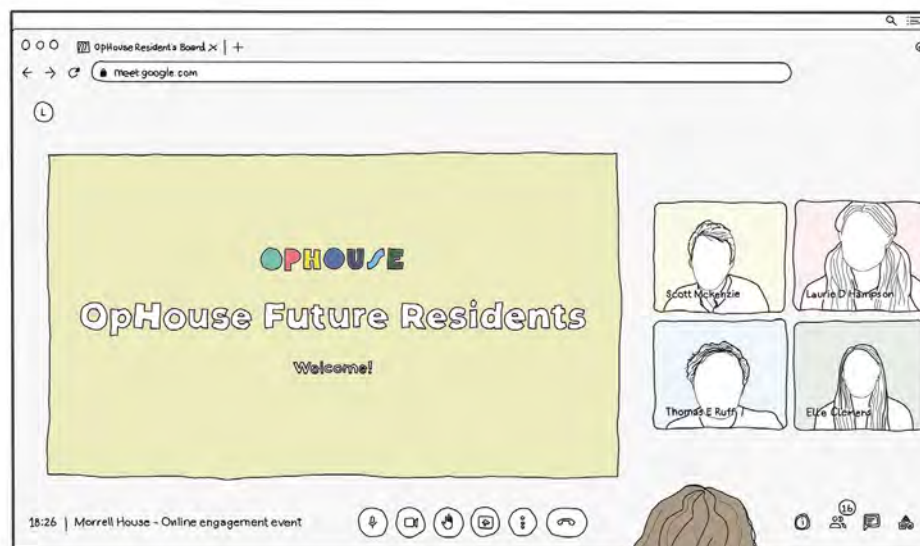
Graphic Design Experience can be shared and learnt amongst each other.

What can you share or offer to the resident community?

Construction industry skills that can be used when self-building.

Experience of self-build within the group can be utilized and taught, with some residents keen to self-build and learn.

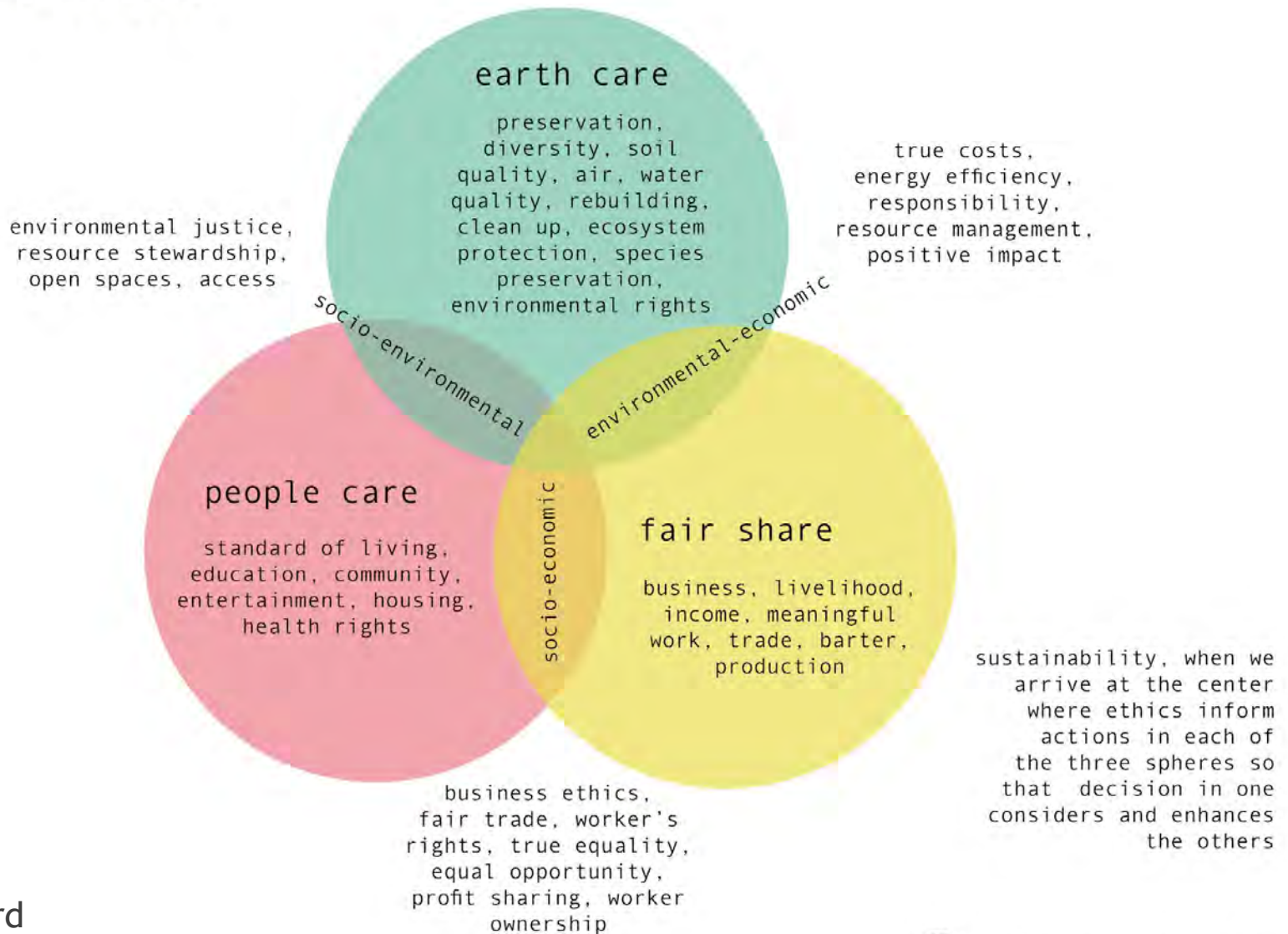
Small business, website design and start up experience.





Thank you for listening

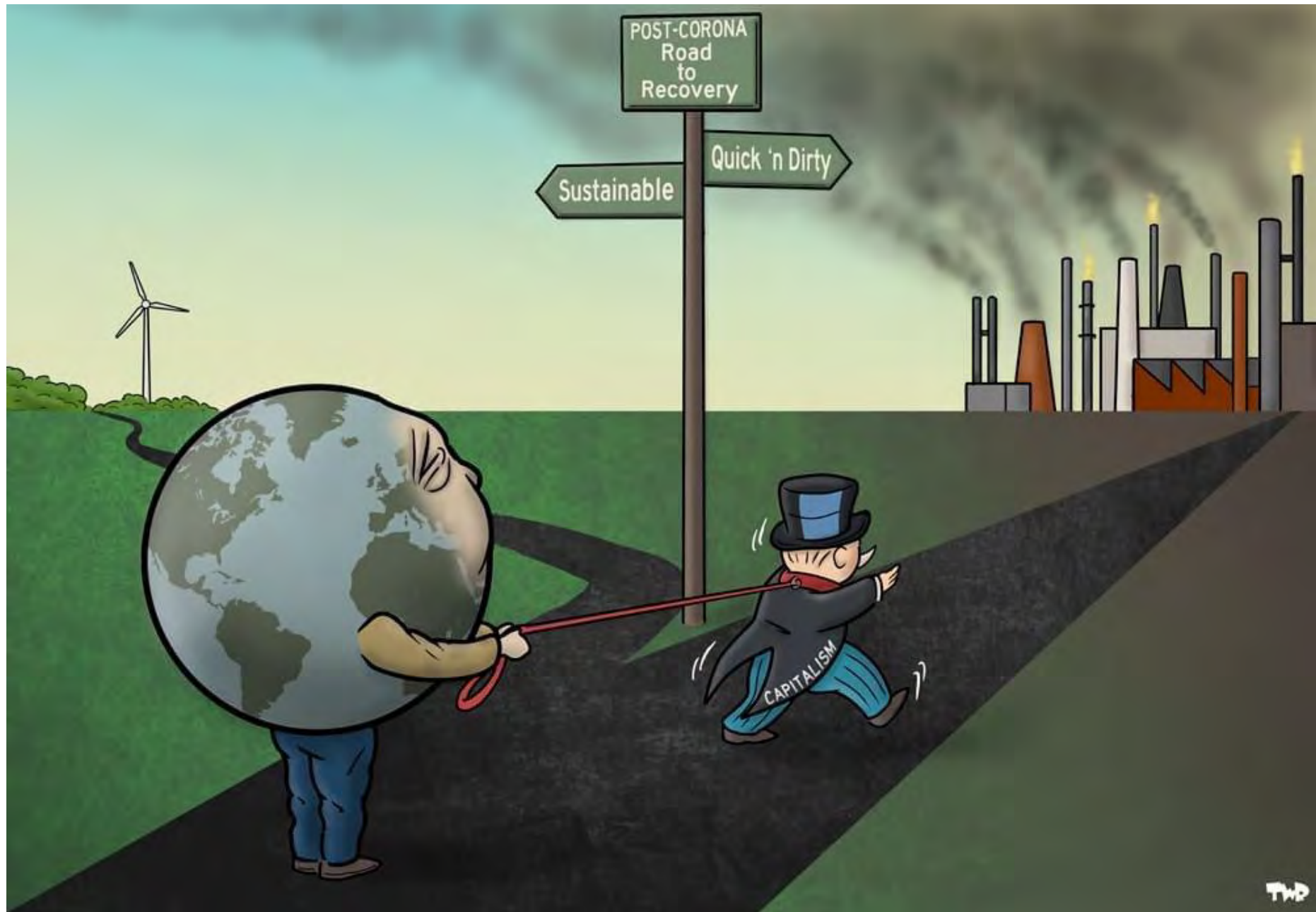
PERMACULTURE

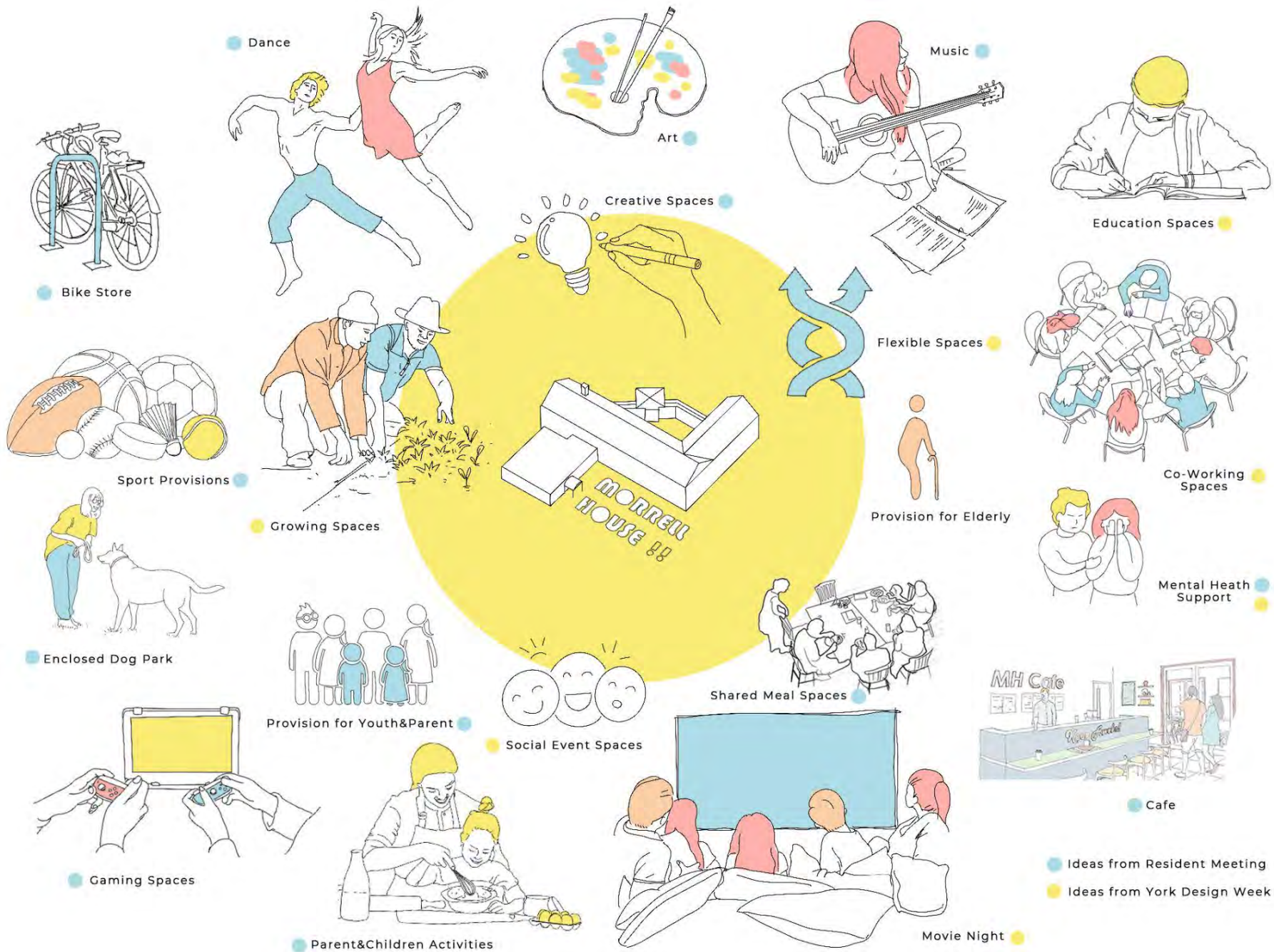


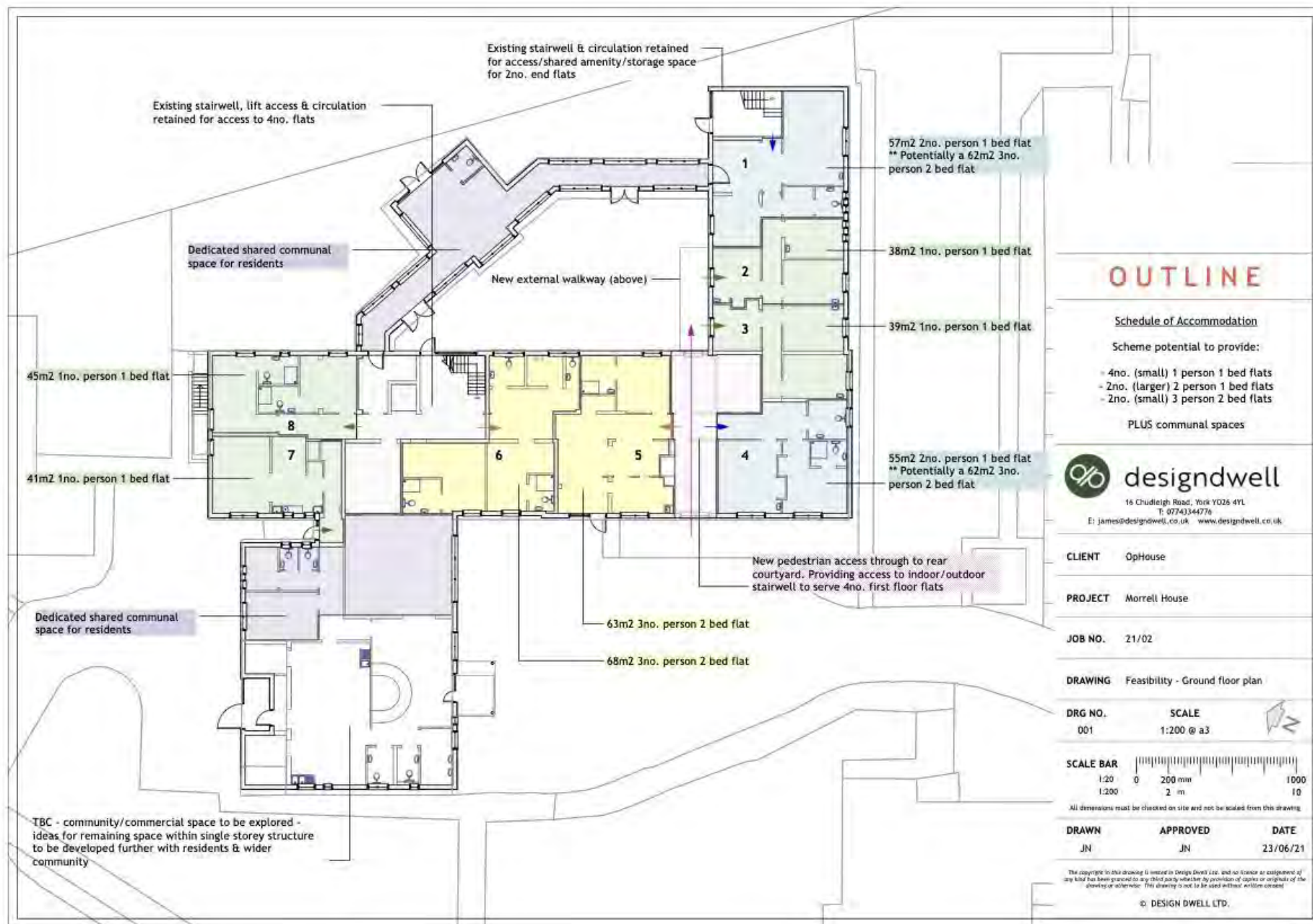
James Neward
Design Lead for OpHouse
@ Morrell House

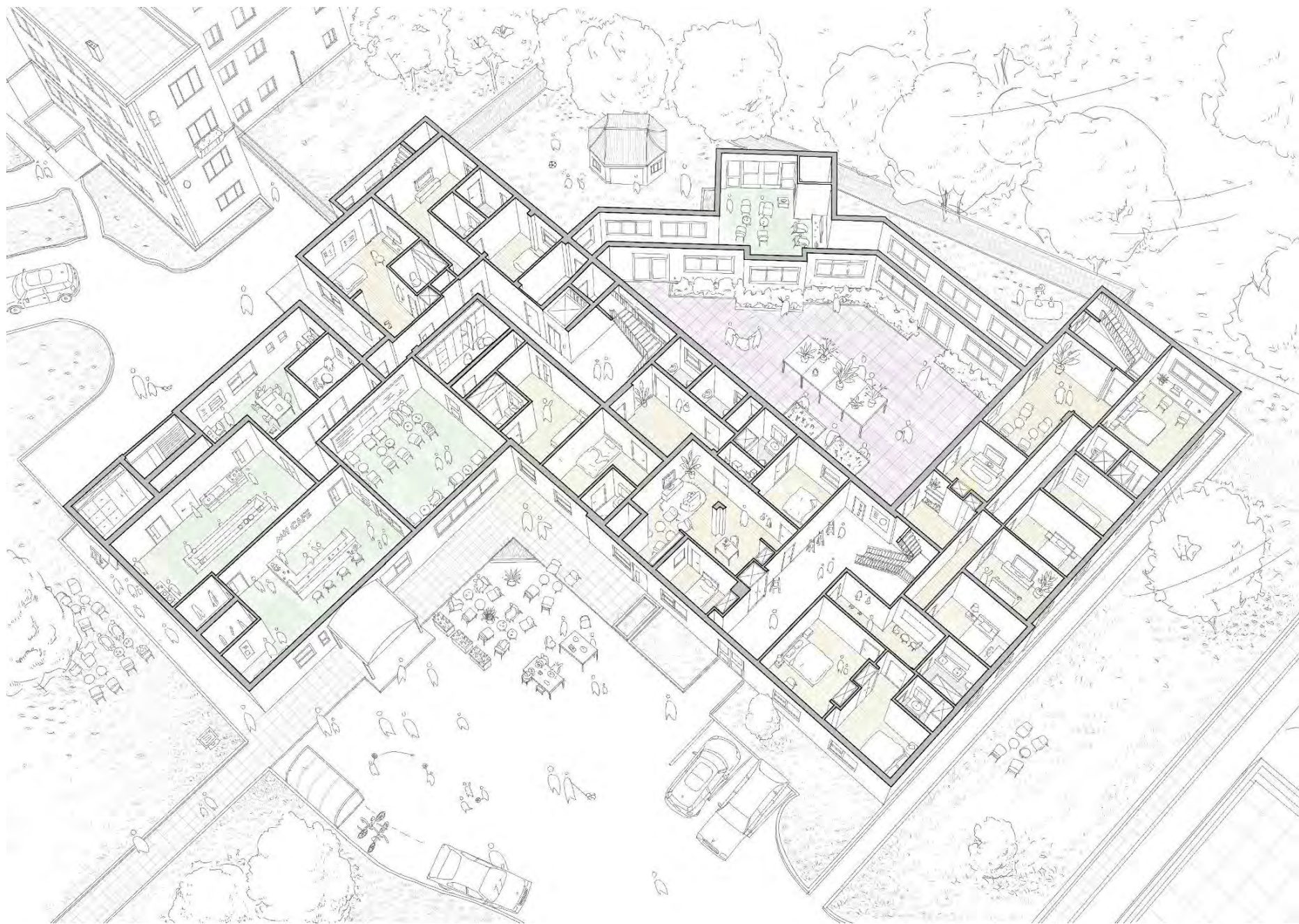


designdwell



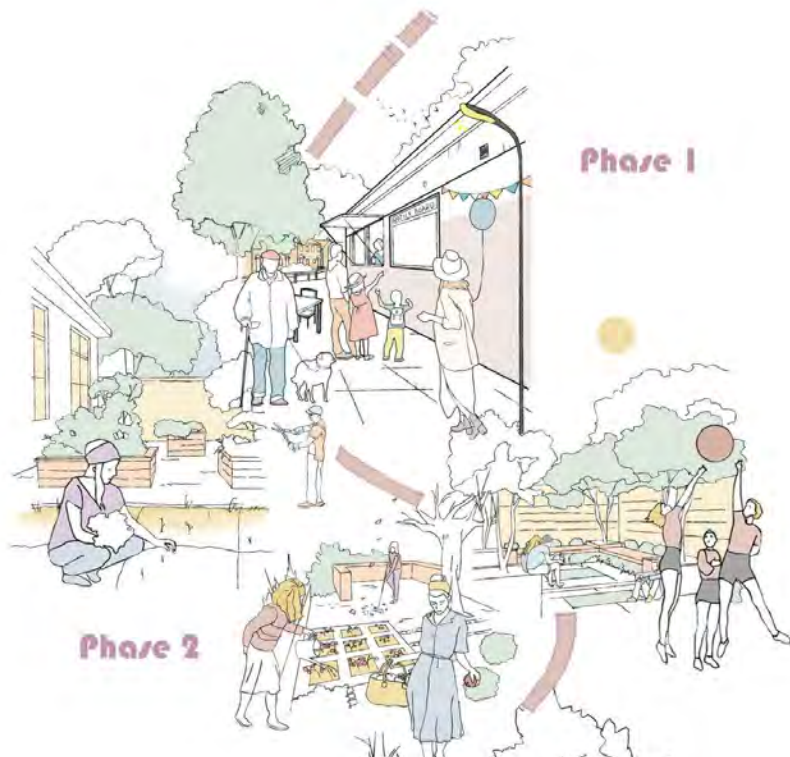












Thriving York community led housing scene



www.ophouse.co.uk



www.yorspace.org



twitter.com/loficoho



www.yoco.uk