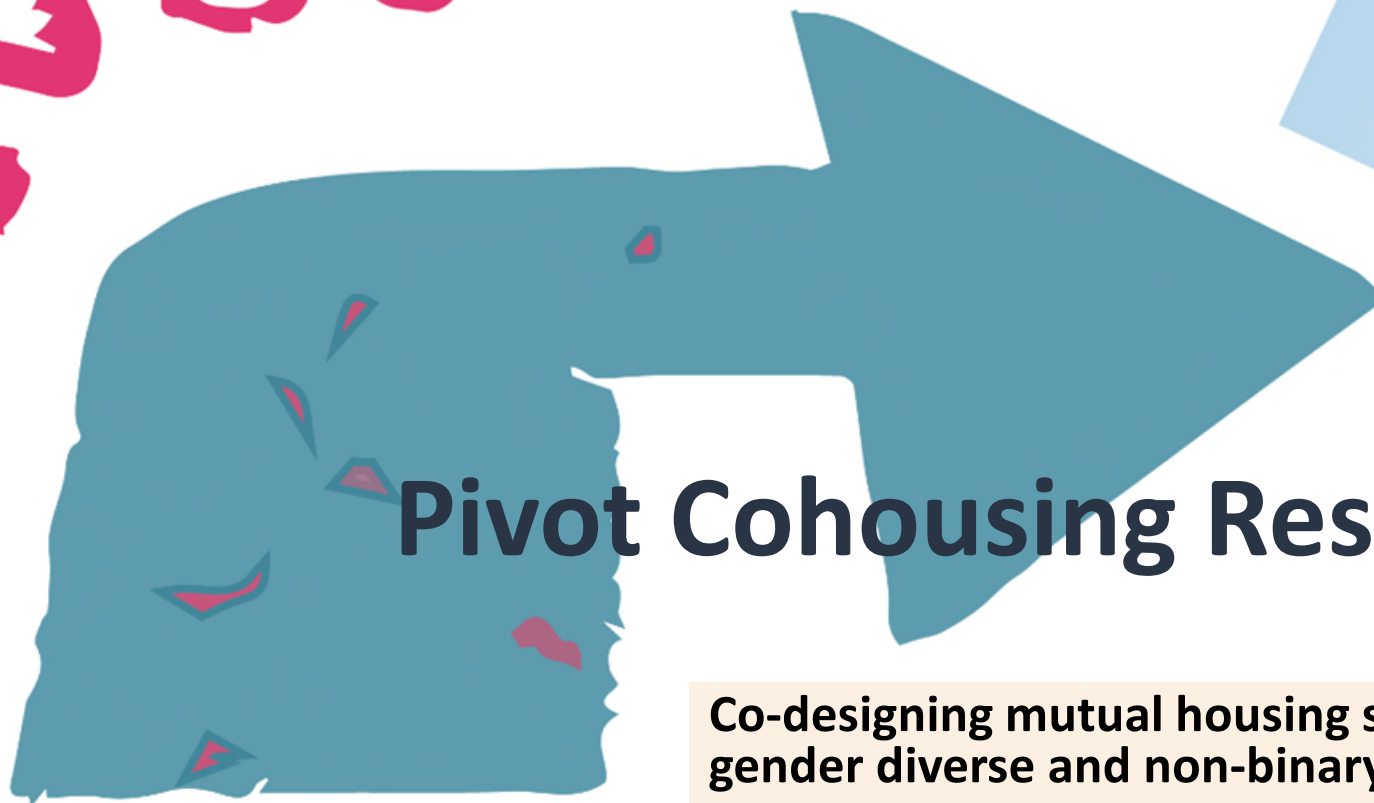


Pivot



Pivot Cohousing Research

Co-designing mutual housing solutions for Trans and gender diverse and non-binary (TGDNB) young people

Myfan Jordan (Community & Social Planner, Banyule Council)

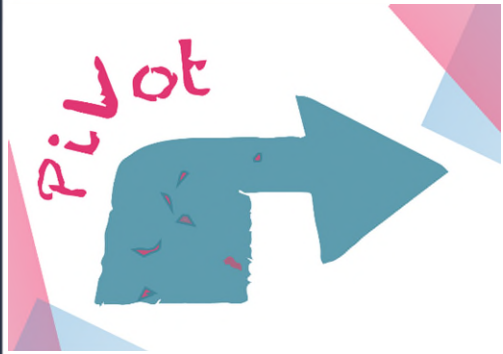
Myfan.jordan@Banyule.vic.gov.au



context

- Australia has a youth homelessness problem, LGBTIQ youth over-represented
- Policy ‘ineffective in reducing youth homelessness’... with ‘fragmented support systems and deficits in service delivery.’
- (<https://www.ahuri.edu.au/sites/default/files/documents/2021-11/AHURI-Prof-Services-Final-Report-Towards-a-Youth-Homelessness-Strategy-for-Victoria%20%282%29.pdf>)





further context

Mental health outcomes for trans youth are 3-4 times higher than for non-trans*

- Attempted suicide 48.1%
- Depression 74.6%
- Anxiety 72.2%

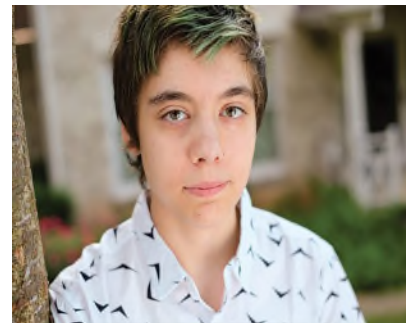
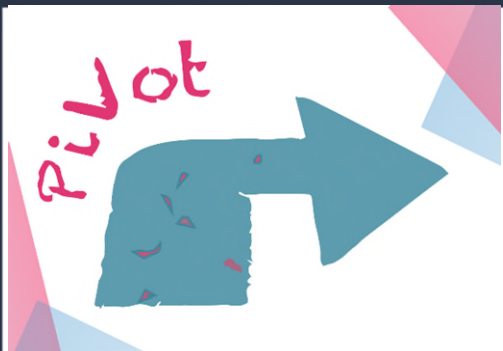


Why?

- Peer rejection (89.0%) and Bullying (74.0%)
- Discrimination (68.9%) and (unaddressed) family violence

A 2015 U.S. Transgender Survey revealed:

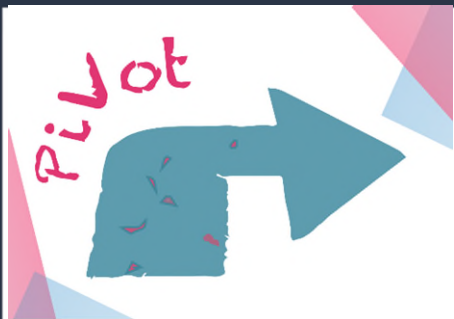
- 'Startling disparities' in finding a job, having a place to live, accessing medical care, and enjoying the support of family and community.



cohousing as a solution?

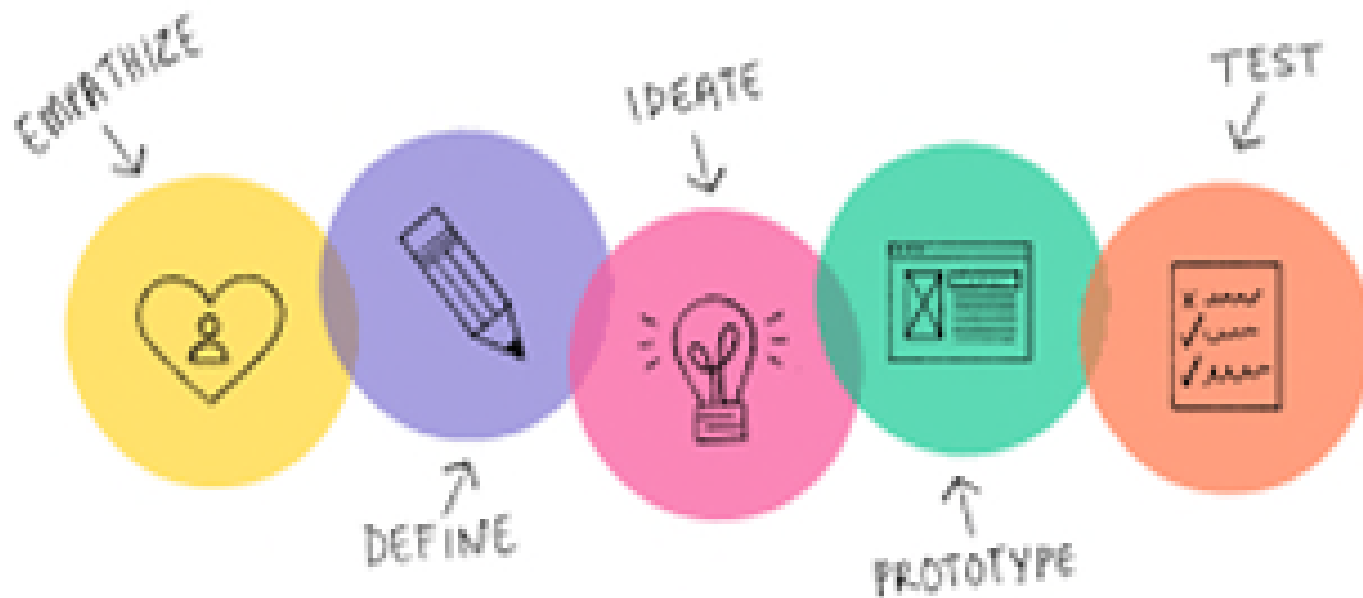
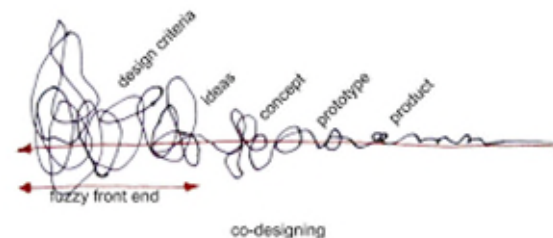
- Secure housing is linked to positive outcomes for individuals and *for society*;
- Could provide a safe transition from homelessness/poor housing to a place of community belonging and cooperation;
- Structured and sociocratic decision-making processes could provide a positive template for personal decision-making.

- (<https://www.ahuri.edu.au/sites/default/files/documents/2021-11/AHURI-Prof-Services-Final-Report-Towards-a-Youth-Homelessness-Strategy-for-Victoria%20%282%29.pdf>)

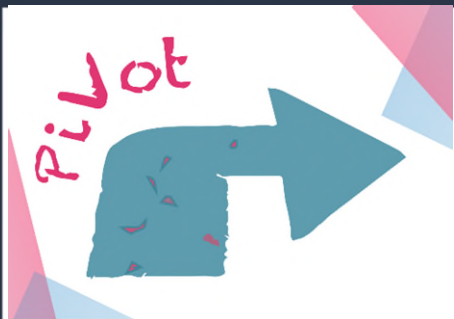


Housing System

the process



Housing
Need

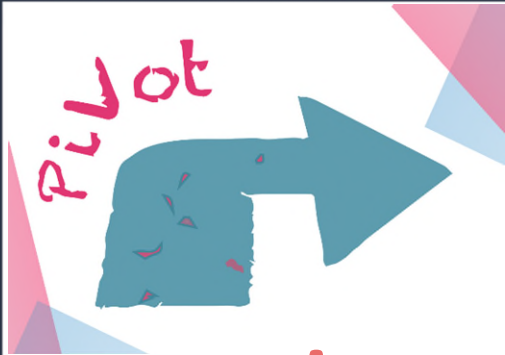


the research so far

- Model #1 - Murundaka (social traditional rental cohousing)
- Model #2 - The Village (smaller, youth specific model with formal support plus mentoring – but not collaborative decision-making)
- Focus on **the social design** with participants
- Housing/financial (policy) pathways from us (local govt)



* Personas were based on real case studies on Trans Housing Facebook site, but anonymised. Images from web not the real people



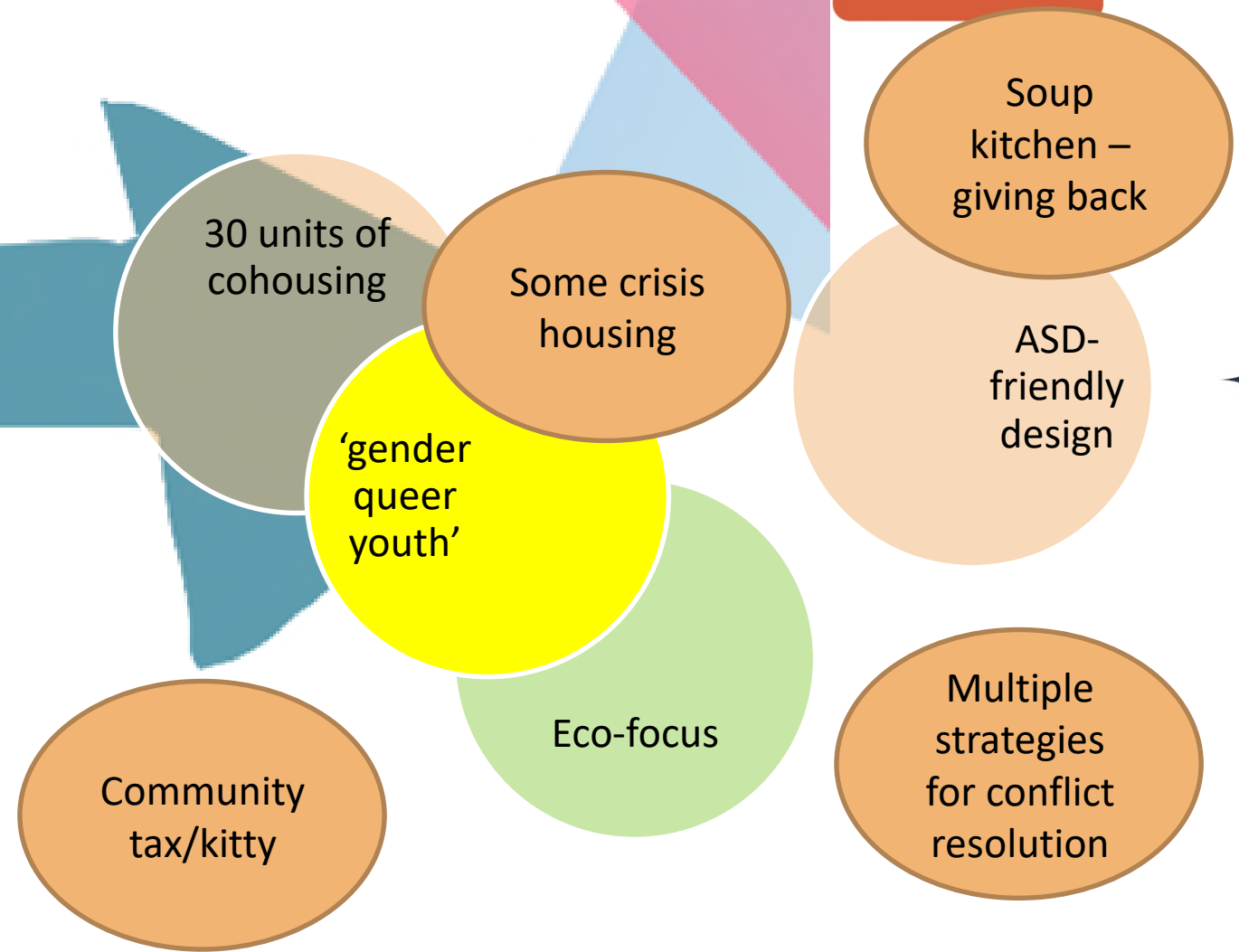
using a strengths-based approach



- 'STEP' LGBTIQ+ housing in Sacramento recognises the need to *'work through the trauma of all that'*
- Pivot has identified high levels of emotional maturity, (mental) health literacy and acceptance of diversity; as shown in our first iteration of the Pivot Model...

the 'magic wand' model...

ailot



outcome...

Report and model to AHURI Conference

Governance
– sociocracy
or consent-
based
decisions?

Test and
iterate –
restrictions

Potential to
scale

Sensory aware,
mental and other
health, exercise
equipment,
performance

Input from
Trans housing
experts

Clarify links
with
broader
community

Diversity
within
'queer'

Golden
values

Hoping to pilot model with neighbouring council