

# Common House/Areas Reservations and Fees



Mike Mariano, Architect  
Capitol Hill Urban Cohousing, Resident & Founder

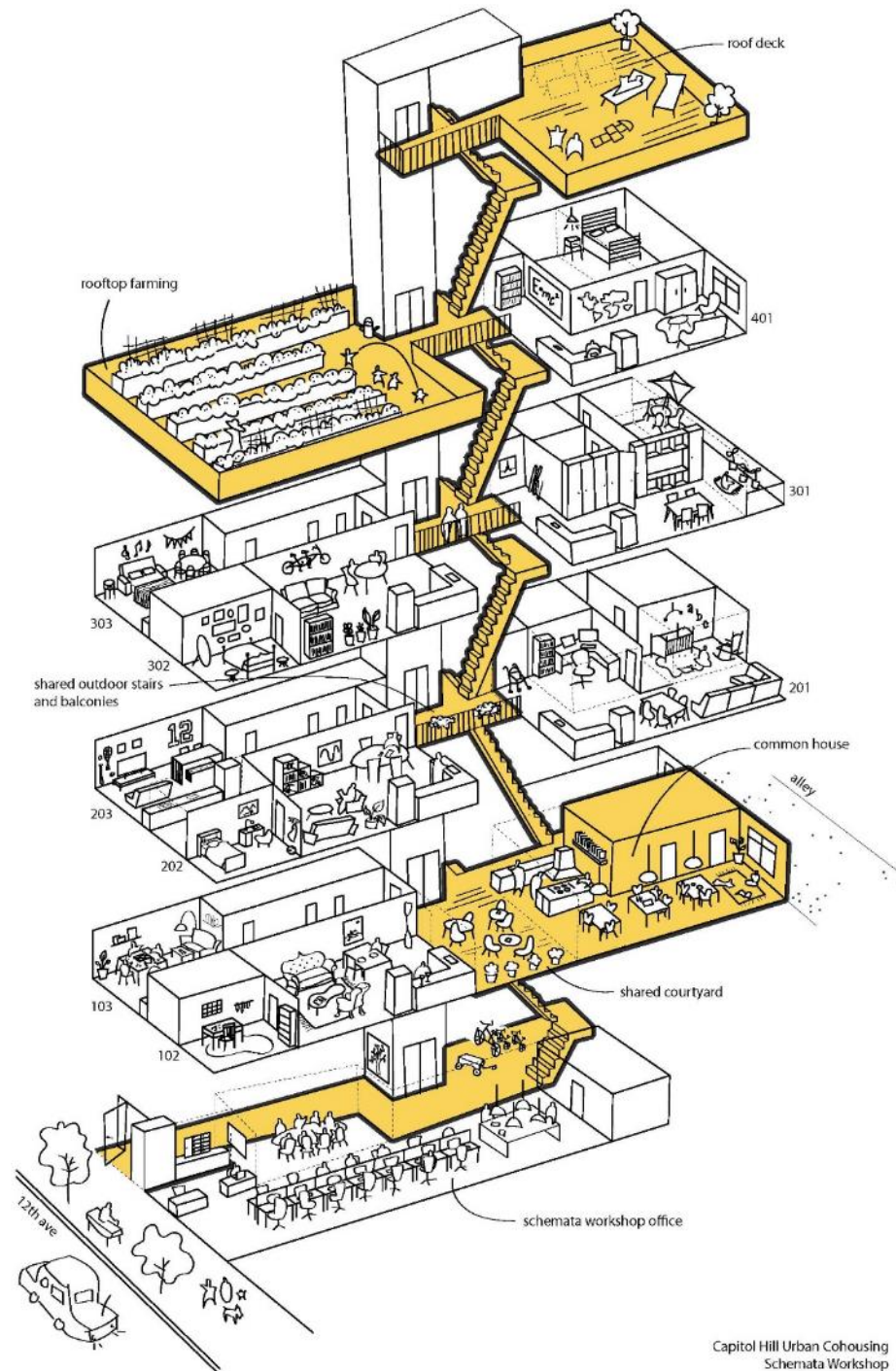
# Cohousing

Collaboration  
Mutual Support  
Trust



# Common Areas

Collaboration  
Mutual Support  
Trust





# Homes



# Cohousing Model

Generosity  
Abundance





# Common Areas Reservations and Fees

Generosity  
Abundance





# Common House



# Common House

## Funding

- HOA dues
- Fixed fees
- Voluntary contributions





# Common Areas: Guest Room

Presume everyone will use it in a way that they need, while being respectful of others

Provide a wish list that a guest can contribute to...be specific

If usage is high, provide all residents with a limited number of days that may be traded

# Common Areas: Other

Shop Space

Art Room

Kiln

Garden

Media Room

Exercise/active Room

Yoga/passive Room

If an activity makes a resident happy and content in community, it benefits the greater community

Offer the presenter or instructor donations from attendees



# Common Areas

## Funding

- HOA dues
- Fixed fees to residents
- Keep fixed costs down:  
Voluntary contributions  
from households for  
discretionary uses

## Stewardship/Maintenance

- HOA dues
- Fixed fees
- Resident responsibility  
and roles to keep costs  
down

# Common Areas Community Events





# Common Areas Community Events

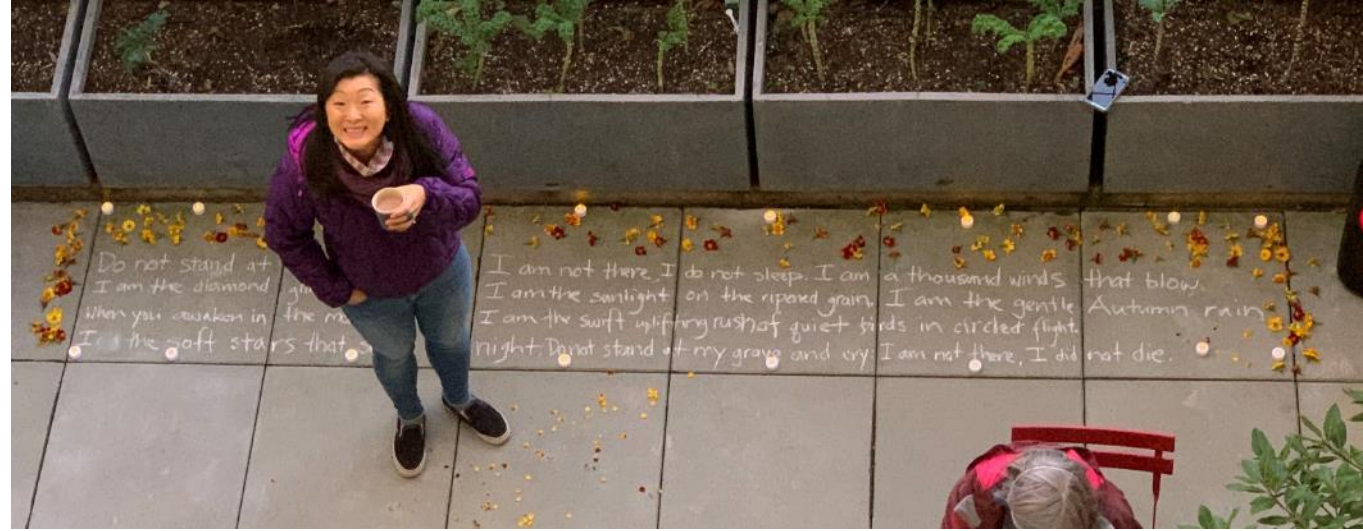
## Funding

- Offer households the opportunity to anonymously contribute to an event
- All households benefit and can enjoy together





# Common Areas Community Events





# Common Areas Community Events

## Funding

- Community Life Team annual budget





# Rooftop Farm





# Rooftop Farm





# Rooftop Farm

## Funding

- Barnraiser (fundraiser)
- Restaurant use
- Sunset Dinner
- Custom-printed canvas bags with a one-time farm produce delivery
- Local school support as learning opportunity

## Stewardship/Maintenance

- Garden Team
- Annual budget proposal and allocation
- Restaurant (annual commitment), Seattle Urban Farm Company

# Rooftop Farm

A high-angle view of a rooftop garden. The garden features several long, narrow wooden planters filled with green leafy plants. A central walkway is paved with grey and white square tiles in a checkered pattern. Two large white patio umbrellas are open on the walkway. A person is sitting on a bench in the middle of the garden, and another person is visible in the background near a table. The rooftop is enclosed by a yellow wall, and other buildings are visible in the background.

<https://vimeo.com/453836336>



# Rooftop Photovoltaic Array





# Rooftop Photovoltaic Array

## Funding

- Proposal was put forth by the household that wanted to see this installed: consensus
- All households benefit from the net-metering energy usage

## Stewardship/Maintenance

- Limited to date, 25-year life expectancy
- Careful review of the system prior to installation – made some improvements

# Common Area Reservations

## Tools

- Shared Google Calendar
- Private Facebook Group
- Mosaic app
- Central Bulletin board and Whiteboard

Generosity  
Abundance

# Common House/Areas Reservations and Fees



Mike Mariano, Architect

[Mike@SchemataWorkshop.com](mailto:Mike@SchemataWorkshop.com)

206.285.1589

